

RBM9 antibody - N-terminal region
Rabbit Polyclonal Antibody
Catalog # AI11732**Specification**

RBM9 antibody - N-terminal region - Product Information

Application	WB
Primary Accession	O43251
Other Accession	NM_001031695 , NP_001026865
Reactivity	Human, Mouse, Rat, Rabbit, Zebrafish, Pig, Horse, Bovine, Dog
Predicted Host	Human, Rat
Clonality	Rabbit
Calculated MW	Polyclonal 40kDa KDa

RBM9 antibody - N-terminal region - Additional Information**Gene ID** 23543**Alias Symbol** Fox-2, HNRBP2, HRNBP2, RTA, dJ106I20.3, fxh, FOX2, RBM9**Other Names**

RNA binding protein fox-1 homolog 2, Fox-1 homolog B, Hexaribonucleotide-binding protein 2, RNA-binding motif protein 9, RNA-binding protein 9, Repressor of tamoxifen transcriptional activity, RBFOX2, FOX2, HRNBP2, RBM9, RTA

Format

Liquid. Purified antibody supplied in 1x PBS buffer with 0.09% (w/v) sodium azide and 2% sucrose.

Reconstitution & Storage

Add 50 ul of distilled water. Final anti-RBM9 antibody concentration is 1 mg/ml in PBS buffer with 2% sucrose. For longer periods of storage, store at 20°C. Avoid repeat freeze-thaw cycles.

Precautions

RBM9 antibody - N-terminal region is for research use only and not for use in diagnostic or therapeutic procedures.

RBM9 antibody - N-terminal region - Protein Information**Name** RBFOX2**Synonyms** FOX2, HRNBP2, RBM9, RTA**Function**

RNA-binding protein that regulates alternative splicing events by binding to 5'-UGCAUGU-3' elements. Prevents binding of U2AF2 to the 3'-splice site. Regulates alternative splicing of tissue-specific exons and of differentially spliced exons during erythropoiesis (By similarity). RNA-binding

protein that seems to act as a coregulatory factor of ER-alpha. Together with RNA binding proteins RBPMS and MBNL1/2, activates vascular smooth muscle cells alternative splicing events (PubMed:37548402).

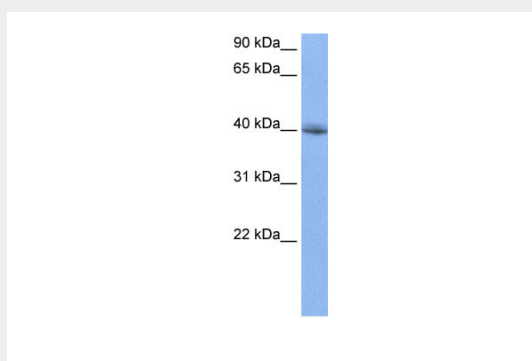
Cellular Location

Nucleus. Cytoplasm.

RBM9 antibody - N-terminal region - Protocols

Provided below are standard protocols that you may find useful for product applications.

- [Western Blot](#)
- [Blocking Peptides](#)
- [Dot Blot](#)
- [Immunohistochemistry](#)
- [Immunofluorescence](#)
- [Immunoprecipitation](#)
- [Flow Cytometry](#)
- [Cell Culture](#)

RBM9 antibody - N-terminal region - Images

WB Suggested Anti-RBM9 Antibody Titration: 0.2-1 µg/ml
Positive Control: Jurkat cell lysate

RBM9 antibody - N-terminal region - References

Yang,G., (2008) Blood 111 (1), 392-401 Reconstitution and Storage:For short term use, store at 2-8C up to 1 week. For long term storage, store at -20C in small aliquots to prevent freeze-thaw cycles.