

SFRS9 antibody - middle region
Rabbit Polyclonal Antibody
Catalog # AI11755**Specification**

SFRS9 antibody - middle region - Product Information

Application	WB
Primary Accession	Q13242
Other Accession	NM_003769 , NP_003760
Reactivity	Human, Mouse, Rat, Rabbit, Zebrafish, Pig, Horse, Bovine, Dog
Predicted Host	Human, Mouse, Rat, Zebrafish, Dog
Clonality	Rabbit
Calculated MW	Polyclonal 25kDa KDa

SFRS9 antibody - middle region - Additional Information**Gene ID** 8683**Alias Symbol** SRp30c, SFRS9**Other Names**

Serine/arginine-rich splicing factor 9, Pre-mRNA-splicing factor SRp30C, Splicing factor, arginine/serine-rich 9, SRSF9, SFRS9, SRP30C

Format

Liquid. Purified antibody supplied in 1x PBS buffer with 0.09% (w/v) sodium azide and 2% sucrose.

Reconstitution & Storage

Add 50 ul of distilled water. Final anti-SFRS9 antibody concentration is 1 mg/ml in PBS buffer with 2% sucrose. For longer periods of storage, store at 20°C. Avoid repeat freeze-thaw cycles.

Precautions

SFRS9 antibody - middle region is for research use only and not for use in diagnostic or therapeutic procedures.

SFRS9 antibody - middle region - Protein Information**Name** SRSF9**Synonyms** SFRS9, SRP30C**Function**

Plays a role in constitutive splicing and can modulate the selection of alternative splice sites. Represses the splicing of MAPT/Tau exon 10.

Cellular Location

Nucleus. Note=Cellular stresses such as heat shock may induce localization to discrete nuclear

bodies termed SAM68 nuclear bodies (SNBs), HAP bodies, or stress bodies. Numerous splicing factors including SRSF1/SFRS1/SF2, SRSF7/SFRS7, SAFB and KHDRBS1/SAM68 accumulate at these structures, which may participate in the post-transcriptional regulation of mRNAs in stressed cells

Tissue Location

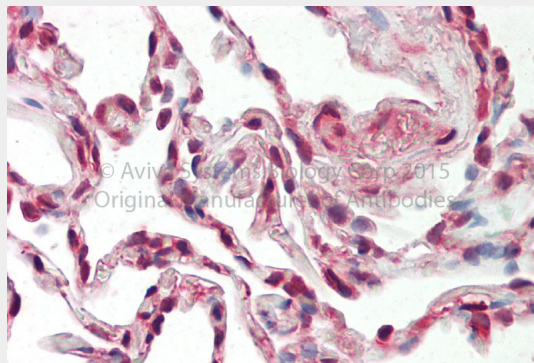
Expressed at high levels in the heart, kidney, pancreas and placenta, and at lower levels in the brain, liver, lung and skeletal muscle.

SFRS9 antibody - middle region - Protocols

Provided below are standard protocols that you may find useful for product applications.

- [Western Blot](#)
- [Blocking Peptides](#)
- [Dot Blot](#)
- [Immunohistochemistry](#)
- [Immunofluorescence](#)
- [Immunoprecipitation](#)
- [Flow Cytometry](#)
- [Cell Culture](#)

SFRS9 antibody - middle region - Images



Rabbit Anti-SRSF9 antibody

Formalin Fixed Paraffin Embedded Tissue: Human Adult Lung Observed Staining: Cytoplasm in hepatocytes

Primary Antibody

Concentration: 1:600

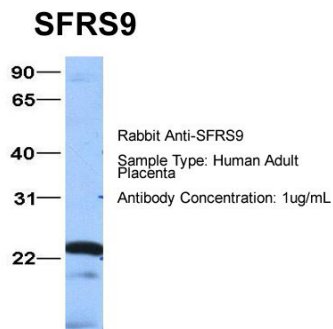
Secondary Antibody: Donkey anti-Rabbit-Cy3

Secondary Antibody

Concentration: 1:200

Magnification: 20X

Exposure Time: 0.5 – 2.0 sec



Host: Rabbit
Target Name: SFRS9
Sample Tissue: Human Adult Placenta
Antibody Dilution: 1.0µg/ml

SFRS9 antibody - middle region - References

Paradis,C., (2007) RNA 13 (8), 1287-1300 Reconstitution and Storage:For short term use, store at 2-8C up to 1 week. For long term storage, store at -20C in small aliquots to prevent freeze-thaw cycles.