

**RRP9 antibody - middle region**  
**Rabbit Polyclonal Antibody**  
**Catalog # AI11766****Specification**

---

**RRP9 antibody - middle region - Product Information**

Application	WB
Primary Accession	<a href="#">O43818</a>
Other Accession	<a href="#">NM_004704</a> , <a href="#">NP_004695</a>
Reactivity	Human, Mouse, Rat, Rabbit, Pig, Horse, Bovine, Dog
Predicted	Rabbit, Horse, Bovine, Dog
Host	Rabbit
Clonality	Polyclonal
Calculated MW	52kDa KDa

**RRP9 antibody - middle region - Additional Information****Gene ID** 9136**Alias Symbol** **U3-55K, RNU3IP2**  
**Other Names**

U3 small nucleolar RNA-interacting protein 2, RRP9 homolog, U3 small nucleolar ribonucleoprotein-associated 55 kDa protein, U3 snoRNP-associated 55 kDa protein, U3-55K, RRP9, RNU3IP2, U355K

**Format**

Liquid. Purified antibody supplied in 1x PBS buffer with 0.09% (w/v) sodium azide and 2% sucrose.

**Reconstitution & Storage**

Add 100 ul of distilled water. Final anti-RRP9 antibody concentration is 1 mg/ml in PBS buffer with 2% sucrose. For longer periods of storage, store at 20°C. Avoid repeat freeze-thaw cycles.

**Precautions**

RRP9 antibody - middle region is for research use only and not for use in diagnostic or therapeutic procedures.

**RRP9 antibody - middle region - Protein Information****Name** RRP9 ([HGNC:16829](#))**Function**

Component of a nucleolar small nuclear ribonucleoprotein particle (snoRNP) thought to participate in the processing and modification of pre-ribosomal RNA (pre-rRNA) (PubMed:<a href="http://www.uniprot.org/citations/26867678" target="\_blank">26867678</a>). Part of the small subunit (SSU) processome, first precursor of the small eukaryotic ribosomal subunit. During the assembly of the SSU processome in the nucleolus, many ribosome biogenesis factors, an RNA chaperone and ribosomal proteins associate with the nascent pre-rRNA and work in concert to

generate RNA folding, modifications, rearrangements and cleavage as well as targeted degradation of pre-ribosomal RNA by the RNA exosome (PubMed:<a href="http://www.uniprot.org/citations/34516797" target="\_blank">34516797</a>).

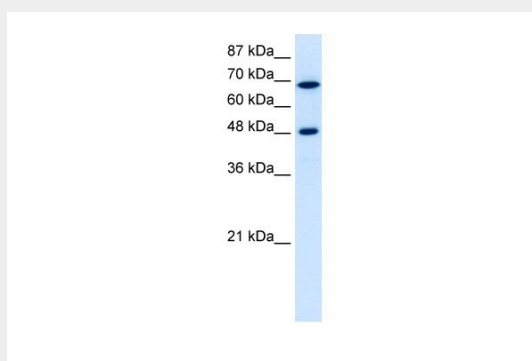
**Cellular Location**

Nucleus, nucleolus

**RRP9 antibody - middle region - Protocols**

Provided below are standard protocols that you may find useful for product applications.

- [Western Blot](#)
- [Blocking Peptides](#)
- [Dot Blot](#)
- [Immunohistochemistry](#)
- [Immunofluorescence](#)
- [Immunoprecipitation](#)
- [Flow Cytometry](#)
- [Cell Culture](#)

**RRP9 antibody - middle region - Images**

WB Suggested Anti-RRP9 Antibody Titration: 5.0µg/ml

Positive Control: Jurkat cell lysate

RRP9 is supported by BioGPS gene expression data to be expressed in Jurkat

**RRP9 antibody - middle region - References**

Verheggen,C., (2002) EMBO J. 21 (11), 2736-2745  
Reconstitution and Storage: For short term use, store at 2-8C up to 1 week. For long term storage, store at -20C in small aliquots to prevent freeze-thaw cycles.