

Igf2bp3 antibody - middle region
Rabbit Polyclonal Antibody
Catalog # AI11781**Specification**

Igf2bp3 antibody - middle region - Product Information

Application	WB
Primary Accession	O9CPN8
Other Accession	NM_023670 , NP_076159
Reactivity	Human, Mouse, Rat, Rabbit, Horse, Yeast, Bovine, Dog
Predicted Host	Rat, Rabbit
Clonality	Rabbit
Calculated MW	Polyclonal 63kDa KDa

Igf2bp3 antibody - middle region - Additional Information**Gene ID** 140488**Alias Symbol** 2610101N11Rik, AA522010, AL022933, AU045931, IMP-3, IMP3, Koc13, MGC61294, Neilsen, mimp3**Other Names**

Insulin-like growth factor 2 mRNA-binding protein 3, IGF2 mRNA-binding protein 3, IMP-3, mIMP-3, IGF-II mRNA-binding protein 3, VICKZ family member 3, Igf2bp3, Vickz3

Format

Liquid. Purified antibody supplied in 1x PBS buffer with 0.09% (w/v) sodium azide and 2% sucrose.

Reconstitution & Storage

Add 50 ul of distilled water. Final anti-Igf2bp3 antibody concentration is 1 mg/ml in PBS buffer with 2% sucrose. For longer periods of storage, store at 20°C. Avoid repeat freeze-thaw cycles.

Precautions

Igf2bp3 antibody - middle region is for research use only and not for use in diagnostic or therapeutic procedures.

Igf2bp3 antibody - middle region - Protein Information**Name** Igf2bp3**Synonyms** Vickz3**Function**

RNA-binding factor that may recruit target transcripts to cytoplasmic protein-RNA complexes (mRNPs). This transcript 'caging' into mRNPs allows mRNA transport and transient storage. It also modulates the rate and location at which target transcripts encounter the translational apparatus

and shields them from endonuclease attacks or microRNA-mediated degradation. Preferentially binds to N6- methyladenosine (m6A)-containing mRNAs and increases their stability (By similarity). Binds to the 3'-UTR of CD44 mRNA and stabilizes it, hence promotes cell adhesion and invadopodia formation (By similarity). Binds to beta-actin/ACTB and MYC transcripts (By similarity). Increases MYC mRNA stability by binding to the coding region instability determinant (CRD) and binding is enhanced by m6A-modification of the CRD (By similarity). Binds to the 5'-UTR of the insulin-like growth factor 2 (IGF2) mRNAs.

Cellular Location

Nucleus. Cytoplasm. Cytoplasm, P- body {ECO:0000250|UniProtKB:O00425}. Cytoplasm, Stress granule {ECO:0000250|UniProtKB:O00425}. Note=Found in lamellipodia of the leading edge, in the perinuclear region, and beneath the plasma membrane. The subcytoplasmic localization is cell specific and regulated by cell contact and growth. Localized at the connecting piece and the tail of the spermatozoa. In response to cellular stress, such as oxidative stress, recruited to stress granules.

Tissue Location

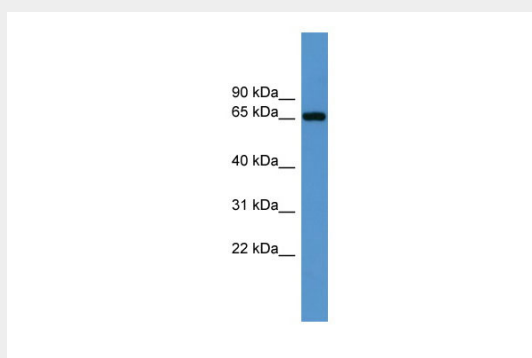
Expressed in oocytes, spermatogonia and spermatocytes (at protein level).

Igf2bp3 antibody - middle region - Protocols

Provided below are standard protocols that you may find useful for product applications.

- [Western Blot](#)
- [Blocking Peptides](#)
- [Dot Blot](#)
- [Immunohistochemistry](#)
- [Immunofluorescence](#)
- [Immunoprecipitation](#)
- [Flow Cytometry](#)
- [Cell Culture](#)

Igf2bp3 antibody - middle region - Images



WB Suggested Anti-Igf2bp3 Antibody Titration: 0.2-1 µg/ml
ELISA Titer: 1:12500
Positive Control: Mouse Kidney