

**NXF3 antibody - C-terminal region**  
**Rabbit Polyclonal Antibody**  
**Catalog # AI11809****Specification**

---

**NXF3 antibody - C-terminal region - Product Information**

Application	<b>WB, IHC</b>
Primary Accession	<a href="#">O9H4D5</a>
Other Accession	<a href="#">NM_022052</a> , <a href="#">NP_071335</a>
Reactivity	<b>Human, Rat, Rabbit, Pig, Horse, Bovine, Dog</b>
Predicted Host	<b>Human, Rabbit, Bovine</b>
Clonality	<b>Rabbit</b>
Calculated MW	<b>Polyclonal</b> <b>58kDa KDa</b>

**NXF3 antibody - C-terminal region - Additional Information****Gene ID** 56000**Other Names**

Nuclear RNA export factor 3, TAP-like protein 3, TAPL-3, NXF3, TAPL3

**Format**

Liquid. Purified antibody supplied in 1x PBS buffer with 0.09% (w/v) sodium azide and 2% sucrose.

**Reconstitution & Storage**

Add 100 ul of distilled water. Final anti-NXF3 antibody concentration is 1 mg/ml in PBS buffer with 2% sucrose. For longer periods of storage, store at 20°C. Avoid repeat freeze-thaw cycles.

**Precautions**

NXF3 antibody - C-terminal region is for research use only and not for use in diagnostic or therapeutic procedures.

**NXF3 antibody - C-terminal region - Protein Information****Name** NXF3**Synonyms** TAPL3**Function**

May function as a tissue-specific nuclear mRNA export factor.

**Cellular Location**

Nucleus. Cytoplasm. Note=Shuttles between the nucleus and the cytoplasm

**Tissue Location**

Expressed at high level in testis and at low level in a small number of tissues

## **NXF3 antibody - C-terminal region - Protocols**

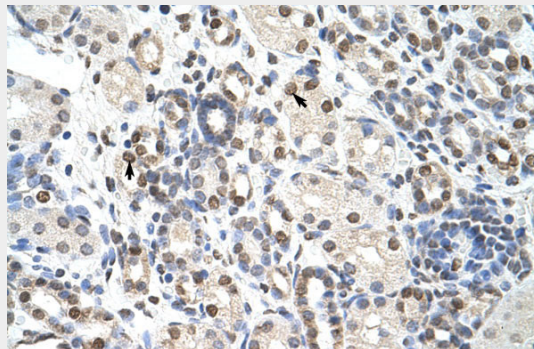
Provided below are standard protocols that you may find useful for product applications.

- [Western Blot](#)
- [Blocking Peptides](#)
- [Dot Blot](#)
- [Immunohistochemistry](#)
- [Immunofluorescence](#)
- [Immunoprecipitation](#)
- [Flow Cytometry](#)
- [Cell Culture](#)

## **NXF3 antibody - C-terminal region - Images**



Rabbit Anti-NXF3 Antibody  
Paraffin Embedded Tissue: Human Heart  
Cellular Data: Myocardial cells  
Antibody Concentration: 4.0-8.0  $\mu\text{g/ml}$   
Magnification: 400X



Rabbit Anti-NXF3 Antibody  
Paraffin Embedded Tissue: Human Kidney  
Cellular Data: Epithelial cells of renal tubule  
Antibody Concentration: 4.0-8.0  $\mu\text{g/ml}$   
Magnification: 400X



WB Suggested Anti-NXF3 Antibody Titration: 1.25µg/ml

Positive Control: RPMI 8226 cell lysate

NXF3 is supported by BioGPS gene expression data to be expressed in RPMI 8226

### **NXF3 antibody - C-terminal region - References**

Jun,L., (2001) Curr. Biol. 11 (18), 1381-1391  
Reconstitution and Storage: For short term use, store at 2-8C up to 1 week. For long term storage, store at -20C in small aliquots to prevent freeze-thaw cycles.