

TNRC6A antibody - N-terminal region
Rabbit Polyclonal Antibody
Catalog # AI11827**Specification**

TNRC6A antibody - N-terminal region - Product Information

Application	WB
Primary Accession	Q8NDV7
Other Accession	NM_014494 , NP_055309
Reactivity	Human, Mouse, Horse, Dog
Predicted	Mouse, Rat, Chicken, Horse, Dog
Host	Rabbit
Clonality	Polyclonal
Calculated MW	210kDa KDa

TNRC6A antibody - N-terminal region - Additional Information**Gene ID** 27327

Alias Symbol CAGH26, DKFZp666E117, FLJ22043, GW1, GW182, KIAA1460, MGC75384, TNRC6

Other Names

Trinucleotide repeat-containing gene 6A protein, CAG repeat protein 26, EMSY interactor protein, GW182 autoantigen, Protein GW1, Glycine-tryptophan protein of 182 kDa, TNRC6A, CAGH26, KIAA1460, TNRC6

Format

Liquid. Purified antibody supplied in 1x PBS buffer with 0.09% (w/v) sodium azide and 2% sucrose.

Reconstitution & Storage

Add 50 ul of distilled water. Final anti-TNRC6A antibody concentration is 1 mg/ml in PBS buffer with 2% sucrose. For longer periods of storage, store at 20°C. Avoid repeat freeze-thaw cycles.

Precautions

TNRC6A antibody - N-terminal region is for research use only and not for use in diagnostic or therapeutic procedures.

TNRC6A antibody - N-terminal region - Protein Information

Name TNRC6A

Synonyms CAGH26, KIAA1460, TNRC6

Function

Plays a role in RNA-mediated gene silencing by both micro- RNAs (miRNAs) and short interfering RNAs (siRNAs). Required for miRNA- dependent repression of translation and for siRNA-dependent endonucleolytic cleavage of complementary mRNAs by argonaute family proteins. As a scaffolding protein, associates with argonaute proteins bound to partially complementary mRNAs, and can

simultaneously recruit CCR4-NOT and PAN deadenylase complexes.

Cellular Location

Cytoplasm, P-body Note=Mammalian P-bodies are also known as GW bodies (GWBs)

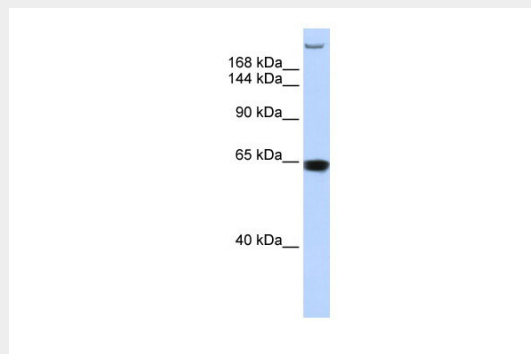
Tissue Location

Ubiquitous.

TNRC6A antibody - N-terminal region - Protocols

Provided below are standard protocols that you may find useful for product applications.

- [Western Blot](#)
- [Blocking Peptides](#)
- [Dot Blot](#)
- [Immunohistochemistry](#)
- [Immunofluorescence](#)
- [Immunoprecipitation](#)
- [Flow Cytometry](#)
- [Cell Culture](#)

TNRC6A antibody - N-terminal region - Images

WB Suggested Anti-TNRC6A Antibody Titration: 0.2-1 µg/ml

ELISA Titer: 1:62500

Positive Control: MCF7 cell lysate

TNRC6A antibody - N-terminal region - References

Eulalio,A., (2008) Nat. Struct. Mol. Biol. 15 (4), 346-353 Reconstitution and Storage:For short term use, store at 2-8C up to 1 week. For long term storage, store at -20C in small aliquots to prevent freeze-thaw cycles.Publications:Bukong, T. N., Hou, W., Kodys, K. & Szabo, G. Ethanol facilitates hepatitis C virus replication via up-regulation of GW182 and heat shock protein 90 in human hepatoma cells. Hepatology 57, 70-80 (2013). WB, H, Mouse, Human, Dog22898980