

Mbnl2 Antibody - middle region
Rabbit Polyclonal Antibody
Catalog # AI11828**Specification**

Mbnl2 Antibody - middle region - Product Information

Application	WB
Primary Accession	F2Z3T4
Reactivity	Human, Mouse, Rat, Rabbit, Zebrafish, Pig, Horse, Bovine, Dog
Predicted	Human, Mouse, Rat, Rabbit, Zebrafish, Pig, Bovine
Host	Rabbit
Clonality	Polyclonal
Calculated MW	41kDa KDa

Mbnl2 Antibody - middle region - Additional Information**Gene ID** 680445**Other Names**

Muscleblind-like protein 2, Mbnl2

Format

Liquid. Purified antibody supplied in 1x PBS buffer with 0.09% (w/v) sodium azide and 2% sucrose.

Reconstitution & Storage

Add 50 µl of distilled water. Final Anti-Mbnl2 antibody concentration is 1 mg/ml in PBS buffer with 2% sucrose. For longer periods of storage, store at -20°C. Avoid repeat freeze-thaw cycles.

Precautions

Mbnl2 Antibody - middle region is for research use only and not for use in diagnostic or therapeutic procedures.

Mbnl2 Antibody - middle region - Protein Information**Name** Mbnl2**Function**

Mediates pre-mRNA alternative splicing regulation. Acts either as activator or repressor of splicing on specific pre-mRNA targets. Inhibits cardiac troponin-T (TNNT2) pre-mRNA exon inclusion but induces insulin receptor (IR) pre-mRNA exon inclusion in muscle. Antagonizes the alternative splicing activity pattern of CELF proteins. RNA-binding protein that binds to 5'ACACCC-3' core sequence, termed zipcode, within the 3'UTR of ITGA3. Binds to CUG triplet repeat expansion in myotonic dystrophy muscle cells by sequestering the target RNAs. Together with RNA binding proteins RBPM5 and RBFOX2, activates vascular smooth muscle cells alternative splicing events (PubMed:37548402). Regulates NCOR2 alternative splicing (PubMed:37548402).

href="http://www.uniprot.org/citations/31283468" target="_blank">31283468). Seems to regulate expression and localization of ITGA3 by transporting it from the nucleus to cytoplasm at adhesion plaques. May play a role in myotonic dystrophy pathophysiology (DM) (By similarity).

Cellular Location

Nucleus {ECO:0000250|UniProtKB:Q5VZF2}. Cytoplasm {ECO:0000250|UniProtKB:Q5VZF2}. Note=Greater concentration in the nucleus. Expressed in or near large cytoplasmic adhesion plaques Location in the cytoplasm is microtubule-dependent {ECO:0000250|UniProtKB:Q5VZF2}

Tissue Location

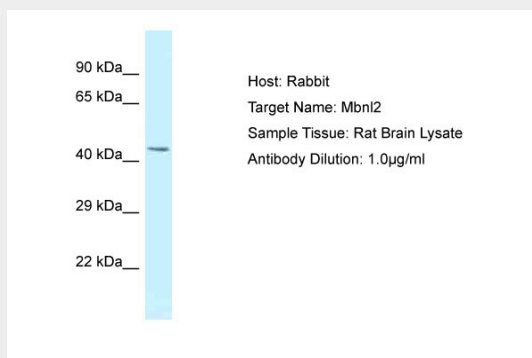
Expressed in the cerebellum, pineal gland and skeletal muscle. In the pineal gland, expressed in pinealocytes, not in perivascular spaces (at protein level).

Mbnl2 Antibody - middle region - Protocols

Provided below are standard protocols that you may find useful for product applications.

- [Western Blot](#)
- [Blocking Peptides](#)
- [Dot Blot](#)
- [Immunohistochemistry](#)
- [Immunofluorescence](#)
- [Immunoprecipitation](#)
- [Flow Cytometry](#)
- [Cell Culture](#)

Mbnl2 Antibody - middle region - Images



Host: Rabbit
Target Name: Mbnl2
Sample Tissue: Rat Brain lysates
Antibody Dilution: 1.0µg/ml