

Rbm25 antibody - middle region
Rabbit Polyclonal Antibody
Catalog # AI11832**Specification**

Rbm25 antibody - middle region - Product Information

Application	WB
Primary Accession	B2RY56
Other Accession	NM_027349 , NP_081625
Reactivity	Human, Mouse, Rat, Rabbit, Zebrafish, Horse, Yeast, Bovine, Dog
Predicted	Human, Mouse, Rabbit, Zebrafish, Chicken, Horse, Bovine, Dog
Host	Rabbit
Clonality	Polyclonal
Calculated MW	99kDa KDa

Rbm25 antibody - middle region - Additional Information**Gene ID** 67039**Alias Symbol** 2600011C06Rik, 2610015J01Rik, A130095G20Rik, AI159652, AL023075, AU043498, RNPC7**Other Names**

RNA-binding protein 25, RNA-binding motif protein 25, Rbm25

Format

Liquid. Purified antibody supplied in 1x PBS buffer with 0.09% (w/v) sodium azide and 2% sucrose.

Reconstitution & Storage

Add 50 ul of distilled water. Final anti-Rbm25 antibody concentration is 1 mg/ml in PBS buffer with 2% sucrose. For longer periods of storage, store at 20°C. Avoid repeat freeze-thaw cycles.

Precautions

Rbm25 antibody - middle region is for research use only and not for use in diagnostic or therapeutic procedures.

Rbm25 antibody - middle region - Protein Information**Name** Rbm25**Function**

RNA-binding protein that acts as a regulator of alternative pre-mRNA splicing. Involved in apoptotic cell death through the regulation of the apoptotic factor BCL2L1 isoform expression. Modulates the ratio of proapoptotic BCL2L1 isoform S to antiapoptotic BCL2L1 isoform L mRNA expression. When overexpressed, stimulates proapoptotic BCL2L1 isoform S 5'-splice site (5'-ss) selection, whereas its depletion caused the accumulation of antiapoptotic BCL2L1 isoform L.

Promotes BCL2L1 isoform S 5'-ss usage through the 5'-CGGGCA-3' RNA sequence. Its association with LUC7L3 promotes U1 snRNP binding to a weak 5' ss in a 5'-CGGGCA-3'-dependent manner. Binds to the exonic splicing enhancer 5'-CGGGCA-3' RNA sequence located within exon 2 of the BCL2L1 pre-mRNA (By similarity).

Cellular Location

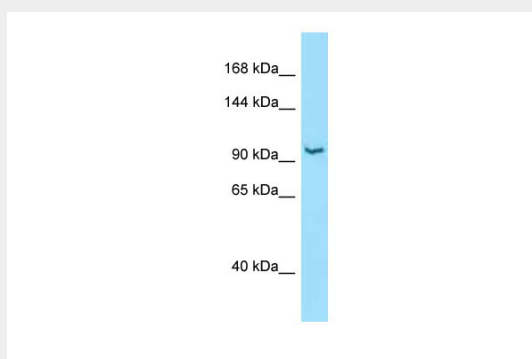
Nucleus speckle {ECO:0000255|PROSITE- ProRule:PRU00627}. Cytoplasm. Note=Colocalizes predominantly, with SFRS2 and LUC7L3 splicing factors, in nuclear speckles. Cytoplasmic localization is faint (By similarity)

Rbm25 antibody - middle region - Protocols

Provided below are standard protocols that you may find useful for product applications.

- [Western Blot](#)
- [Blocking Peptides](#)
- [Dot Blot](#)
- [Immunohistochemistry](#)
- [Immunofluorescence](#)
- [Immunoprecipitation](#)
- [Flow Cytometry](#)
- [Cell Culture](#)

Rbm25 antibody - middle region - Images



WB Suggested Anti-Rbm25 Antibody Titration: 1.0 µg/ml
Positive Control: Mouse Liver