

NXF5 antibody - middle region
Rabbit Polyclonal Antibody
Catalog # AI11840**Specification**

NXF5 antibody - middle region - Product Information

Application	WB, IHC
Primary Accession	O9H1B4
Other Accession	NM_032946 , NP_116564
Reactivity	Human, Mouse, Rat, Rabbit, Dog
Predicted	Human
Host	Rabbit
Clonality	Polyclonal
Calculated MW	44kDa KDa

NXF5 antibody - middle region - Additional Information**Other Names**

Nuclear RNA export factor 5, TAP-like protein 1, TAPL-1, NXF5, TAPL1

Format

Liquid. Purified antibody supplied in 1x PBS buffer with 0.09% (w/v) sodium azide and 2% sucrose.

Reconstitution & Storage

Add 100 ul of distilled water. Final anti-NXF5 antibody concentration is 1 mg/ml in PBS buffer with 2% sucrose. For longer periods of storage, store at 20°C. Avoid repeat freeze-thaw cycles.

Precautions

NXF5 antibody - middle region is for research use only and not for use in diagnostic or therapeutic procedures.

NXF5 antibody - middle region - Protein Information

Name NXF5

Synonyms TAPL1

Function

Could be involved in the export of mRNA from the nucleus to the cytoplasm. Could also have a role in polarized cytoplasmic transport and localization of mRNA in neurons.

Cellular Location

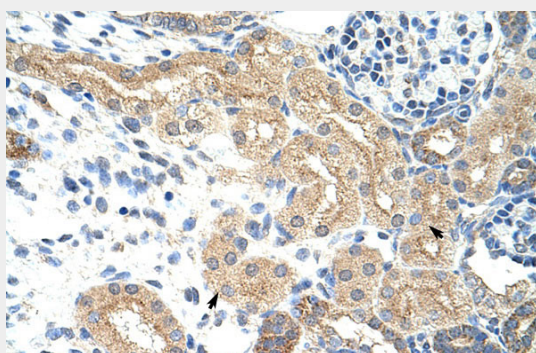
Cytoplasm. Nucleus. Note=Mainly localized in the cytoplasm of cells and more particularly in the cell body and neurites of hippocampal neurons. Although nuclear localization is also observed Not detected at nuclear rim

NXF5 antibody - middle region - Protocols

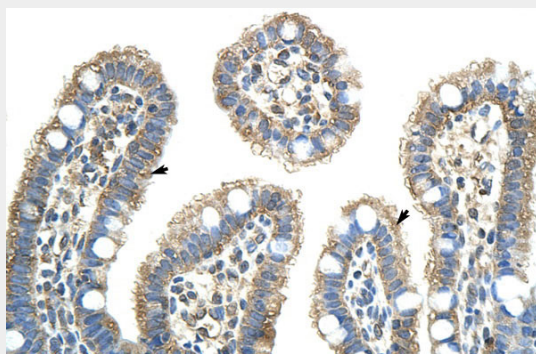
Provided below are standard protocols that you may find useful for product applications.

- [Western Blot](#)
- [Blocking Peptides](#)
- [Dot Blot](#)
- [Immunohistochemistry](#)
- [Immunofluorescence](#)
- [Immunoprecipitation](#)
- [Flow Cytometry](#)
- [Cell Culture](#)

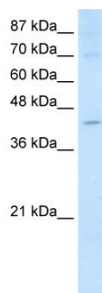
NXF5 antibody - middle region - Images



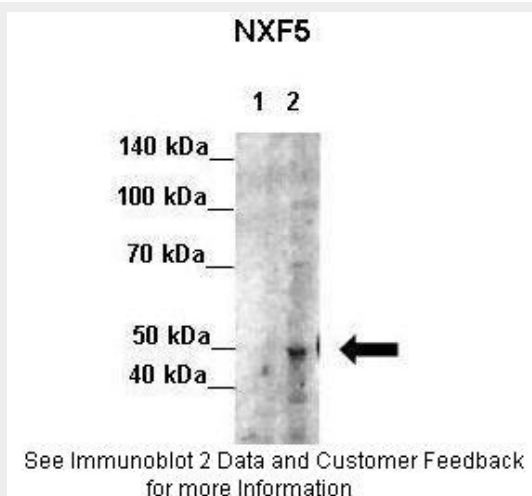
Rabbit Anti-NXF5 Antibody
Paraffin Embedded Tissue: Human Kidney
Cellular Data: Epithelial cells of renal tubule
Antibody Concentration: 4.0-8.0 µg/ml
Magnification: 400X



Rabbit Anti-NXF5 Antibody
Paraffin Embedded Tissue: Human Intestine
Cellular Data: Epithelial cells of intestinal villas
Antibody Concentration: 4.0-8.0 µg/ml
Magnification: 400X



WB Suggested Anti-NXF5 Antibody Titration: 2.5µg/ml
Positive Control: Jurkat cell lysate



Lanes: Lane 1: 7ug HeLa cytosolic extract Lane 2: 7ug HeLa nuclear extract
Primary Antibody Dilution: 1:100
Secondary Antibody: Anti-rabbit-HRP
Secondary Antibody Dilution: 1:500
Gene Name: NXF5
Submitted by: Seiji Masuda, Kitashirakawa Oiwakecho, Kyoto University

NXF5 antibody - middle region - References

Frints, S.G., (2003) Am. J. Med. Genet. A 119 (3), 367-374
Reconstitution and Storage: For short term use, store at 2-8°C up to 1 week. For long term storage, store at -20°C in small aliquots to prevent freeze-thaw cycles.