

CPEB2 antibody - middle region
Rabbit Polyclonal Antibody
Catalog # AI11855**Specification**

CPEB2 antibody - middle region - Product Information

Application	WB
Primary Accession	O7Z5Q1
Other Accession	XM_944544 , XP_949637
Reactivity	Human, Mouse, Rat, Rabbit, Zebrafish, Pig, Horse, Bovine, Dog
Predicted	Human, Mouse, Rat, Rabbit, Zebrafish, Pig, Chicken, Bovine
Host	Rabbit
Clonality	Polyclonal
Calculated MW	37kDa KDa

CPEB2 antibody - middle region - Additional Information**Gene ID** 132864**Other Names**

Cytoplasmic polyadenylation element-binding protein 2, CPE-BP2, CPE-binding protein 2, hCPEB-2, CPEB2

Format

Liquid. Purified antibody supplied in 1x PBS buffer with 0.09% (w/v) sodium azide and 2% sucrose.

Reconstitution & Storage

Add 100 ul of distilled water. Final anti-CPEB2 antibody concentration is 1 mg/ml in PBS buffer with 2% sucrose. For longer periods of storage, store at 20°C. Avoid repeat freeze-thaw cycles.

Precautions

CPEB2 antibody - middle region is for research use only and not for use in diagnostic or therapeutic procedures.

CPEB2 antibody - middle region - Protein Information**Name** CPEB2**Function**

May play a role in translational regulation of stored mRNAs in transcriptionally inactive haploid spermatids. Binds to poly(U) RNA oligomers (By similarity). Required for cell cycle progression, specifically for the transition from metaphase to anaphase (PubMed:26398195).

Cellular Location

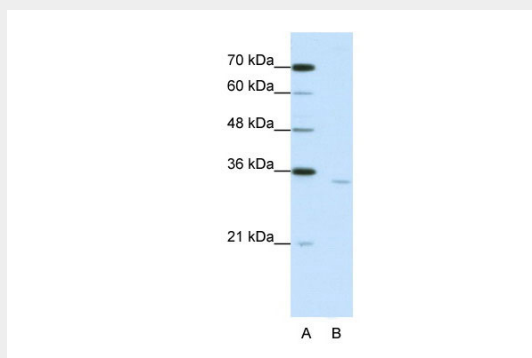
Cytoplasm {ECO:0000250|UniProtKB:Q812E0}.

CPEB2 antibody - middle region - Protocols

Provided below are standard protocols that you may find useful for product applications.

- [Western Blot](#)
- [Blocking Peptides](#)
- [Dot Blot](#)
- [Immunohistochemistry](#)
- [Immunofluorescence](#)
- [Immunoprecipitation](#)
- [Flow Cytometry](#)
- [Cell Culture](#)

CPEB2 antibody - middle region - Images



WB Suggested Anti-CPEB2 Antibody Titration: 1.25 μ g/ml

ELISA Titer: 1:62500

Positive Control: Jurkat cell lysate

CPEB2 antibody - middle region - References

Kurihara Y. (2003) Biol Reprod. 69(1):261-8. Epub 2003 Apr 2. Reconstitution and Storage: For short term use, store at 2-8C up to 1 week. For long term storage, store at -20C in small aliquots to prevent freeze-thaw cycles.