

**Masp2 antibody - middle region**  
**Rabbit Polyclonal Antibody**  
**Catalog # AI11910****Specification**

---

**Masp2 antibody - middle region - Product Information**

Application	WB
Primary Accession	<a href="#">O91WP0</a>
Other Accession	<a href="#">NM_001003893</a> , <a href="#">NP_001003893</a>
Reactivity	Human, Mouse, Rat, Zebrafish, Pig, Horse, Bovine
Predicted	Human, Mouse, Rat, Chicken, Horse, Bovine
Host	Rabbit
Clonality	Polyclonal
Calculated MW	75kDa KDa

**Masp2 antibody - middle region - Additional Information****Gene ID** 17175**Alias Symbol** MASP-2, MAp19**Other Names**

Mannan-binding lectin serine protease 2, 3.4.21.104, MBL-associated serine protease 2, Mannose-binding protein-associated serine protease 2, MASP-2, Mannan-binding lectin serine protease 2 A chain, Mannan-binding lectin serine protease 2 B chain, Masp2

**Format**

Liquid. Purified antibody supplied in 1x PBS buffer with 0.09% (w/v) sodium azide and 2% sucrose.

**Reconstitution & Storage**

Add 50 ul of distilled water. Final anti-Masp2 antibody concentration is 1 mg/ml in PBS buffer with 2% sucrose. For longer periods of storage, store at 20°C. Avoid repeat freeze-thaw cycles.

**Precautions**

Masp2 antibody - middle region is for research use only and not for use in diagnostic or therapeutic procedures.

**Masp2 antibody - middle region - Protein Information****Name** Masp2**Function**

Serum protease that plays an important role in the activation of the complement system via mannose-binding lectin. After activation by auto-catalytic cleavage it cleaves C2 and C4, leading to their activation and to the formation of C3 convertase (By similarity).

**Cellular Location**

Secreted.

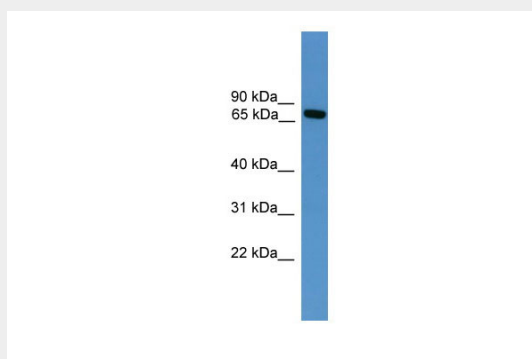
**Tissue Location**

Plasma.

**Masp2 antibody - middle region - Protocols**

Provided below are standard protocols that you may find useful for product applications.

- [Western Blot](#)
- [Blocking Peptides](#)
- [Dot Blot](#)
- [Immunohistochemistry](#)
- [Immunofluorescence](#)
- [Immunoprecipitation](#)
- [Flow Cytometry](#)
- [Cell Culture](#)

**Masp2 antibody - middle region - Images**

WB Suggested Anti-Masp2 Antibody Titration: 0.2-1  $\mu$ g/ml

ELISA Titer: 1:62500

Positive Control: Mouse Heart