

GNAS antibody - C-terminal region
Rabbit Polyclonal Antibody
Catalog # AI11939**Specification**

GNAS antibody - C-terminal region - Product Information

Application	WB
Primary Accession	Q5FWY2
Other Accession	NM_080426 , NP_536351
Reactivity	Human, Mouse, Rat, Rabbit, Zebrafish, Pig, Goat, Horse, Bovine, Dog
Predicted Host	Human, Mouse, Rat, Pig, Bovine
Clonality	Rabbit
Calculated MW	Polyclonal 42kDa KDa

GNAS antibody - C-terminal region - Additional Information**Gene ID 2778**

Alias Symbol	AHO, C20orf45, GNAS1, GNASXL, GPSA, GSA, GSP, NESP, NESP55, PHP1A, PHP1B, POH, XL2, XLalphas, PHP1C
--------------	---

Other Names

GNAS complex locus , GNAS

Format

Liquid. Purified antibody supplied in 1x PBS buffer with 0.09% (w/v) sodium azide and 2% sucrose.

Reconstitution & Storage

Add 100 ul of distilled water. Final anti-GNAS antibody concentration is 1 mg/ml in PBS buffer with 2% sucrose. For longer periods of storage, store at 20°C. Avoid repeat freeze-thaw cycles.

Precautions

GNAS antibody - C-terminal region is for research use only and not for use in diagnostic or therapeutic procedures.

GNAS antibody - C-terminal region - Protein Information**Name** GNAS {ECO:0000313|EMBL:AAH89157.2}**Function**

Guanine nucleotide-binding protein (G protein) involved as transducer in olfactory signal transduction controlled by G protein- coupled receptors (GPCRs). Contains the guanine nucleotide binding site and alternates between an active, GTP-bound state and an inactive, GDP- bound state. Signaling by an activated GPCR promotes GDP release and GTP binding. The alpha subunit has a low GTPase activity that converts bound GTP to GDP, thereby terminating the signal. Both GDP release and GTP hydrolysis are modulated by numerous regulatory proteins. GNAL/G(olf) alpha

specifically mediates olfactory signal transduction within the olfactory neuroepithelium and the basal ganglia following GPCRs activation. Acts by promoting the specific activation of adenylyl cyclase ADCY3, resulting in increased levels of the signaling molecule cAMP.

Cellular Location

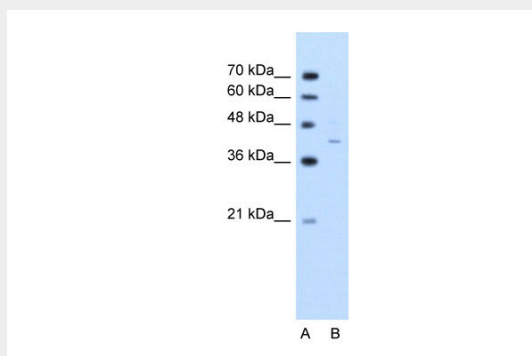
Cell membrane {ECO:0000256|ARBA:ARBA00004193}; Lipid-anchor {ECO:0000256|ARBA:ARBA00004193}

GNAS antibody - C-terminal region - Protocols

Provided below are standard protocols that you may find useful for product applications.

- [Western Blot](#)
- [Blocking Peptides](#)
- [Dot Blot](#)
- [Immunohistochemistry](#)
- [Immunofluorescence](#)
- [Immunoprecipitation](#)
- [Flow Cytometry](#)
- [Cell Culture](#)

GNAS antibody - C-terminal region - Images



WB Suggested Anti-GNAS Antibody Titration: 2.5µg/ml

Positive Control: Jurkat cell lysate

There is BioGPS gene expression data showing that GNAS is expressed in Jurkat