

RHOBTB1 antibody - middle region
Rabbit Polyclonal Antibody
Catalog # AI11955

Specification

RHOBTB1 antibody - middle region - Product Information

Application	WB, IHC
Primary Accession	O94844
Other Accession	NM_014836 , NP_055651
Reactivity	Human, Mouse, Rat, Rabbit, Zebrafish, Goat, Sheep, Horse, Bovine, Dog
Predicted Host	Mouse, Pig, Goat, Horse, Bovine, Dog
Clonality	Rabbit
Calculated MW	Polyclonal 77kDa KDa

RHOBTB1 antibody - middle region - Additional Information

Gene ID 9886

Alias Symbol KIAA0740, MGC33059, MGC33841

Other Names

Rho-related BTB domain-containing protein 1, RHOBTB1, KIAA0740

Format

Liquid. Purified antibody supplied in 1x PBS buffer with 0.09% (w/v) sodium azide and 2% sucrose.

Reconstitution & Storage

Add 50 ul of distilled water. Final anti-RHOBTB1 antibody concentration is 1 mg/ml in PBS buffer with 2% sucrose. For longer periods of storage, store at 20°C. Avoid repeat freeze-thaw cycles.

Precautions

RHOBTB1 antibody - middle region is for research use only and not for use in diagnostic or therapeutic procedures.

RHOBTB1 antibody - middle region - Protein Information

Name RHOBTB1

Synonyms KIAA0740

Tissue Location

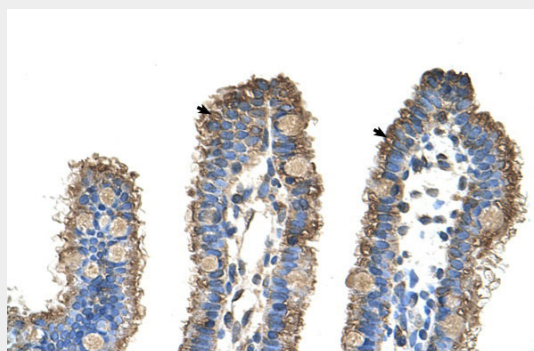
Ubiquitous, with highest levels in skeletal muscle, placenta, testis, stomach, and kidney, followed by uterus and adrenal gland. Expressed in a variety of fetal tissues

RHOBTB1 antibody - middle region - Protocols

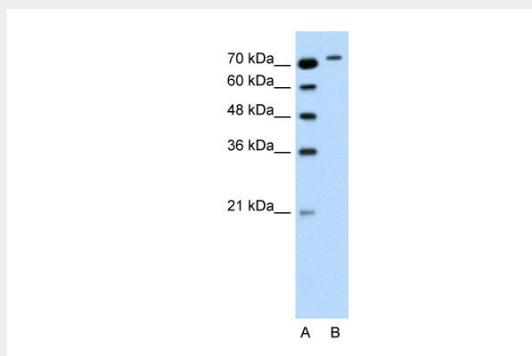
Provided below are standard protocols that you may find useful for product applications.

- [Western Blot](#)
- [Blocking Peptides](#)
- [Dot Blot](#)
- [Immunohistochemistry](#)
- [Immunofluorescence](#)
- [Immunoprecipitation](#)
- [Flow Cytometry](#)
- [Cell Culture](#)

RHOBTB1 antibody - middle region - Images



Rabbit Anti-RHOBTB1 Antibody
Paraffin Embedded Tissue: Human Intestine
Cellular Data: Epithelial cells of intestinal villas
Antibody Concentration: 4.0-8.0 $\mu\text{g/ml}$
Magnification: 400X



WB Suggested Anti-RHOBTB1 Antibody Titration: 0.2-1 $\mu\text{g/ml}$
Positive Control: Jurkat cell lysate

RHOBTB1 antibody - middle region - References

Beder, L.B., (2006) J. Cancer Res. Clin. Oncol. 132 (1), 19-27
Reconstitution and Storage: For short term use, store at 2-8C up to 1 week. For long term storage, store at -20C in small aliquots to prevent freeze-thaw cycles.