

CD40 antibody - N-terminal region
Rabbit Polyclonal Antibody
Catalog # AI11961**Specification**

CD40 antibody - N-terminal region - Product Information

Application	WB
Primary Accession	P25942
Other Accession	NM_001250 , NP_001241
Reactivity	Human, Rabbit
Predicted	Human
Host	Rabbit
Clonality	Polyclonal
Calculated MW	30kDa KDa

CD40 antibody - N-terminal region - Additional Information**Gene ID 958****Alias Symbol** **Bp50, CDW40, MGC9013, TNFRSF5, p50**
Other Names

Tumor necrosis factor receptor superfamily member 5, B-cell surface antigen CD40, Bp50, CD40L receptor, CDw40, CD40, CD40, TNFRSF5

Format

Liquid. Purified antibody supplied in 1x PBS buffer with 0.09% (w/v) sodium azide and 2% sucrose.

Reconstitution & Storage

Add 50 ul of distilled water. Final anti-CD40 antibody concentration is 1 mg/ml in PBS buffer with 2% sucrose. For longer periods of storage, store at 20°C. Avoid repeat freeze-thaw cycles.

Precautions

CD40 antibody - N-terminal region is for research use only and not for use in diagnostic or therapeutic procedures.

CD40 antibody - N-terminal region - Protein Information**Name** CD40**Synonyms** TNFRSF5**Function**Receptor for TNFSF5/CD40LG (PubMed: <http://www.uniprot.org/citations/31331973> target="_blank">31331973). Transduces TRAF6- and MAP3K8-mediated signals that activate ERK in macrophages and B cells, leading to induction of immunoglobulin secretion (By similarity).**Cellular Location**

[Isoform I]: Cell membrane; Single-pass type I membrane protein

Tissue Location

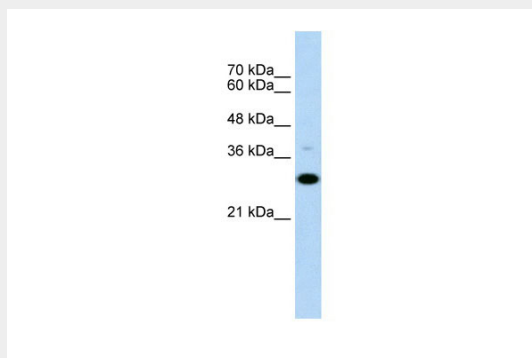
B-cells and in primary carcinomas.

CD40 antibody - N-terminal region - Protocols

Provided below are standard protocols that you may find useful for product applications.

- [Western Blot](#)
- [Blocking Peptides](#)
- [Dot Blot](#)
- [Immunohistochemistry](#)
- [Immunofluorescence](#)
- [Immunoprecipitation](#)
- [Flow Cytometry](#)
- [Cell Culture](#)

CD40 antibody - N-terminal region - Images



WB Suggested Anti-CD40 Antibody Titration: 0.2-1 $\mu\text{g/ml}$

Positive Control: Raji cell lysate

CD40 is strongly supported by BioGPS gene expression data to be expressed in Human Raji cells

CD40 antibody - N-terminal region - References

von (2006) Blood 107 (7), 2786-2789
Reconstitution and Storage: For short term use, store at 2-8C up to 1 week. For long term storage, store at -20C in small aliquots to prevent freeze-thaw cycles.