

Endou antibody - middle region
Rabbit Polyclonal Antibody
Catalog # AI11994**Specification**

Endou antibody - middle region - Product Information

Application	WB
Primary Accession	Q3V188
Other Accession	NM_001168693 , NP_001162164
Reactivity	Human, Mouse, Rat, Rabbit, Horse, Bovine, Dog
Predicted Host	Human, Mouse, Rat
Clonality	Rabbit
Calculated MW	Polyclonal 45kDa KDa

Endou antibody - middle region - Additional Information**Gene ID** 19011**Alias Symbol** Pp11r, Tcl-30**Other Names**

Poly(U)-specific endoribonuclease, 3.1.-., Placental protein 11-related protein, PP11-related protein, Protein endoU, T-cell-specific protein 30, Tcl-30, Uridylate-specific endoribonuclease, Endou, Pp11r

Format

Liquid. Purified antibody supplied in 1x PBS buffer with 0.09% (w/v) sodium azide and 2% sucrose.

Reconstitution & Storage

Add 50 ul of distilled water. Final anti-Endou antibody concentration is 1 mg/ml in PBS buffer with 2% sucrose. For longer periods of storage, store at 20°C. Avoid repeat freeze-thaw cycles.

Precautions

Endou antibody - middle region is for research use only and not for use in diagnostic or therapeutic procedures.

Endou antibody - middle region - Protein Information**Name** Endou**Synonyms** Pp11r**Function**

Endoribonuclease that cleaves single-stranded RNAs at 5' of uridylates and releases a product with a 2',3'-cyclic phosphate at the 3'-end. The UU and GU sites are more efficiently cleaved than CU and AU sites. Targets mRNAs to regulate their expression (By similarity).

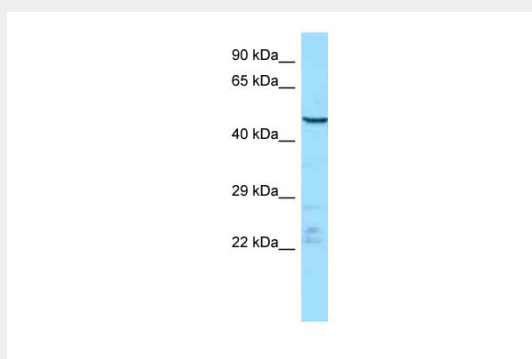
Cellular Location
Secreted.**Tissue Location**

Specifically expressed in T-cells during apoptosis. Expressed in surface heat stable antigen (HSA)-containing T-cells populations (CD4(-)CD8(-)HSA(+), CD4(+)CD8(-)HSA(+), CD4(-)CD8(+)HSA(+), and CD4(+)CD8(+)HSA(+)) and not in the HSA(-) single positive T-cell populations of the thymus or spleen, suggesting that expression is lost during T-cell maturation and is absent at the most mature stages of T-cell development.

Endou antibody - middle region - Protocols

Provided below are standard protocols that you may find useful for product applications.

- [Western Blot](#)
- [Blocking Peptides](#)
- [Dot Blot](#)
- [Immunohistochemistry](#)
- [Immunofluorescence](#)
- [Immunoprecipitation](#)
- [Flow Cytometry](#)
- [Cell Culture](#)

Endou antibody - middle region - Images

WB Suggested Anti-Endou Antibody Titration: 1.0 µg/ml
Positive Control: Mouse Thymus