

**CLEC4M antibody - middle region**  
**Rabbit Polyclonal Antibody**  
**Catalog # AI12013****Specification**

---

**CLEC4M antibody - middle region - Product Information**

Application	WB
Primary Accession	<a href="#">O9H2X3</a>
Other Accession	<a href="#">NM_014257</a> , <a href="#">NP_055072</a>
Reactivity	Human, Mouse, Rat, Rabbit, Zebrafish, Pig
Predicted	Human, Rat
Host	Rabbit
Clonality	Polyclonal
Calculated MW	45kDa kDa

**CLEC4M antibody - middle region - Additional Information****Gene ID** 10332

Alias Symbol	CD209L, CD299, DC-SIGN2, DC-SIGNR, DCSIGNR, HP10347, L-SIGN, LSIGN, MGC129964, MGC47866
--------------	---

**Other Names**

C-type lectin domain family 4 member M, CD209 antigen-like protein 1, DC-SIGN-related protein, DC-SIGNR, Dendritic cell-specific ICAM-3-grabbing non-integrin 2, DC-SIGN2, Liver/lymph node-specific ICAM-3-grabbing non-integrin, L-SIGN, CD299, CLEC4M, CD209L, CD209L1, CD299

**Format**

Liquid. Purified antibody supplied in 1x PBS buffer with 0.09% (w/v) sodium azide and 2% sucrose.

**Reconstitution & Storage**

Add 50 ul of distilled water. Final anti-CLEC4M antibody concentration is 1 mg/ml in PBS buffer with 2% sucrose. For longer periods of storage, store at 20°C. Avoid repeat freeze-thaw cycles.

**Precautions**

CLEC4M antibody - middle region is for research use only and not for use in diagnostic or therapeutic procedures.

**CLEC4M antibody - middle region - Protein Information****Name** CLEC4M

**Synonyms** CD209L, CD209L1, CD299

**Function**

Probable pathogen-recognition receptor involved in peripheral immune surveillance in liver. May mediate the endocytosis of pathogens which are subsequently degraded in lysosomal compartments. Is a receptor for ICAM3, probably by binding to mannose-like carbohydrates.

**Cellular Location**

[Isoform 1]: Cell membrane; Single- pass type II membrane protein [Isoform 3]: Cell membrane; Single- pass type II membrane protein [Isoform 6]: Secreted. [Isoform 10]: Secreted.

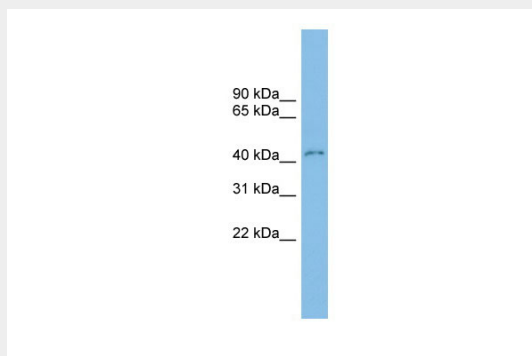
**Tissue Location**

Predominantly highly expressed in liver sinusoidal endothelial cells and in lymph node. Found in placental endothelium but not in macrophages. Expressed in type II alveolar cells and lung endothelial cells.

**CLEC4M antibody - middle region - Protocols**

Provided below are standard protocols that you may find useful for product applications.

- [Western Blot](#)
- [Blocking Peptides](#)
- [Dot Blot](#)
- [Immunohistochemistry](#)
- [Immunofluorescence](#)
- [Immunoprecipitation](#)
- [Flow Cytometry](#)
- [Cell Culture](#)

**CLEC4M antibody - middle region - Images**

WB Suggested Anti-CLEC4M Antibody Titration: 0.2-1 µg/ml

ELISA Titer: 1:1562500

Positive Control: Human kidney