

**GJD3 antibody - C-terminal region**  
**Rabbit Polyclonal Antibody**  
**Catalog # AI12045****Specification**

---

**GJD3 antibody - C-terminal region - Product Information**

Application	WB
Primary Accession	<a href="#">Q8N144</a>
Other Accession	<a href="#">NM_152219</a> , <a href="#">NP_689343</a>
Reactivity	Human
Predicted	Pig
Host	Rabbit
Clonality	Polyclonal
Calculated MW	32kDa KDa

**GJD3 antibody - C-terminal region - Additional Information****Gene ID** 125111**Alias Symbol** CX31.9, Cx30.2, GJA11, GJC1**Other Names**

Gap junction delta-3 protein, Connexin-31.9, Cx31.9, Gap junction alpha-11 protein, Gap junction chi-1 protein, GJD3, GJA11, GJC1

**Format**

Liquid. Purified antibody supplied in 1x PBS buffer with 0.09% (w/v) sodium azide and 2% sucrose.

**Reconstitution & Storage**

Add 50 ul of distilled water. Final anti-GJD3 antibody concentration is 1 mg/ml in PBS buffer with 2% sucrose. For longer periods of storage, store at 20°C. Avoid repeat freeze-thaw cycles.

**Precautions**

GJD3 antibody - C-terminal region is for research use only and not for use in diagnostic or therapeutic procedures.

**GJD3 antibody - C-terminal region - Protein Information****Name** GJD3**Synonyms** GJA11, GJC1**Function**

One gap junction consists of a cluster of closely packed pairs of transmembrane channels, the connexons, through which materials of low MW diffuse from one cell to a neighboring cell.

**Cellular Location**

Cell membrane; Multi-pass membrane protein. Cell junction, gap junction

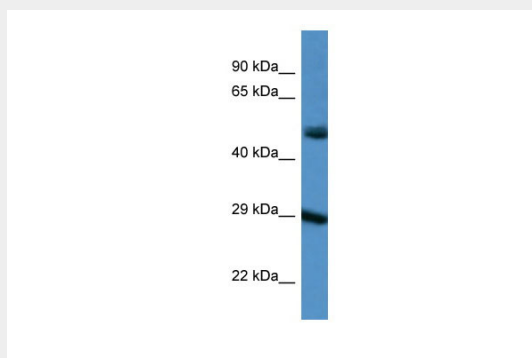
**Tissue Location**

Expressed in vascular smooth muscle cells. Found in heart, colon, and artery (at protein level).  
Found in cerebral cortex, heart, liver, lung, kidney, spleen and testis

**GJD3 antibody - C-terminal region - Protocols**

Provided below are standard protocols that you may find useful for product applications.

- [Western Blot](#)
- [Blocking Peptides](#)
- [Dot Blot](#)
- [Immunohistochemistry](#)
- [Immunofluorescence](#)
- [Immunoprecipitation](#)
- [Flow Cytometry](#)
- [Cell Culture](#)

**GJD3 antibody - C-terminal region - Images**

WB Suggested Anti-GJD3 Antibody Titration: 1.0 µg/ml  
Positive Control: 293T Whole Cell