

SPIC antibody - N-terminal region
Rabbit Polyclonal Antibody
Catalog # AI12064**Specification**

SPIC antibody - N-terminal region - Product Information

Application	WB
Primary Accession	Q6P3D7
Other Accession	NM_011461 , NP_035591
Reactivity	Mouse
Predicted	Mouse
Host	Rabbit
Clonality	Polyclonal
Calculated MW	27kDa KDa

SPIC antibody - N-terminal region - Additional Information**Gene ID** 20728**Alias Symbol** Prf, Spi-C, C76795, AU019198**Other Names**

Transcription factor Spi-C, Pu.1-related factor, Prf, Spic

Format

Liquid. Purified antibody supplied in 1x PBS buffer with 0.09% (w/v) sodium azide and 2% sucrose.

Reconstitution & Storage

Add 100 ul of distilled water. Final anti-SPIC antibody concentration is 1 mg/ml in PBS buffer with 2% sucrose. For longer periods of storage, store at 20°C. Avoid repeat freeze-thaw cycles.

Precautions

SPIC antibody - N-terminal region is for research use only and not for use in diagnostic or therapeutic procedures.

SPIC antibody - N-terminal region - Protein Information**Name** Spic**Function**

Controls the development of red pulp macrophages required for red blood cells recycling and iron homeostasis. Transcription factor that binds to the PU-box, a purine-rich DNA sequence (5'-GAGGA[AT]-3') that can act as a lymphoid-specific enhancer. Regulates VCAM1 gene expression.

Cellular Location

Nucleus.

Tissue Location

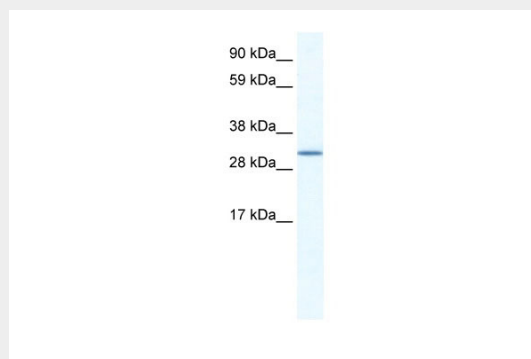
Expressed in lymphoid tissues, including spleen, bone marrow and thymus. According to PubMed:19037245, highly expressed in red pulp macrophages and, at lower, levels in B-cells, but not in other cells, including, monocytes, dendritic cells and other tissue macrophages. According to PubMed:10464163 expressed in pre- and mature B-cells but not in immature B-cells; according to PubMed:10187812 not expressed in pre- but predominantly in mature B-cells and at lower levels in macrophages.

SPIC antibody - N-terminal region - Protocols

Provided below are standard protocols that you may find useful for product applications.

- [Western Blot](#)
- [Blocking Peptides](#)
- [Dot Blot](#)
- [Immunohistochemistry](#)
- [Immunofluorescence](#)
- [Immunoprecipitation](#)
- [Flow Cytometry](#)
- [Cell Culture](#)

SPIC antibody - N-terminal region - Images



WB Suggested Anti-SPIC Antibody Titration: 1.25µg/ml
ELISA Titer: 1:312500
Positive Control: SP2/0 cell lysate

SPIC antibody - N-terminal region - References

Kosmider, O., et al., (2005) Cancer Cell 8(6), 467-478 Reconstitution and Storage: For short term use, store at 2-8°C up to 1 week. For long term storage, store at -20°C in small aliquots to prevent freeze-thaw cycles.