

TSG101 antibody - middle region
Rabbit Polyclonal Antibody
Catalog # AI12066**Specification**

TSG101 antibody - middle region - Product Information

Application	WB
Primary Accession	Q61187
Other Accession	NM_021884 , NP_068684
Reactivity	Human, Mouse, Rat, Rabbit, Goat, Horse, Yeast, Bovine, Guinea Pig, Dog
Predicted	Human, Mouse, Rabbit, Pig, Goat, Horse, Bovine, Dog
Host	Rabbit
Clonality	Polyclonal
Calculated MW	43kDa KDa

TSG101 antibody - middle region - Additional Information**Gene ID** 22088**Alias Symbol** CC2, AI255943**Other Names**

Tumor susceptibility gene 101 protein, ESCRT-I complex subunit TSG101, Tsg101

Format

Liquid. Purified antibody supplied in 1x PBS buffer with 0.09% (w/v) sodium azide and 2% sucrose.

Reconstitution & Storage

Add 100 ul of distilled water. Final anti-TSG101 antibody concentration is 1 mg/ml in PBS buffer with 2% sucrose. For longer periods of storage, store at 20°C. Avoid repeat freeze-thaw cycles.

Precautions

TSG101 antibody - middle region is for research use only and not for use in diagnostic or therapeutic procedures.

TSG101 antibody - middle region - Protein Information**Name** Tsg101**Function**

Component of the ESCRT-I complex, a regulator of vesicular trafficking process. Binds to ubiquitinated cargo proteins and is required for the sorting of endocytic ubiquitinated cargos into multivesicular bodies (MVBs). Mediates the association between the ESCRT-0 and ESCRT-I complex. Required for completion of cytokinesis; the function requires CEP55. May be involved in cell growth and differentiation. Acts as a negative growth regulator. Required for the exosomal release of SDCBP, CD63 and syndecan (By similarity). It may also play a role in the extracellular release of microvesicles that differ from the exosomes (By similarity).

Cellular Location

Cytoplasm {ECO:0000250|UniProtKB:Q99816}. Early endosome membrane {ECO:0000250|UniProtKB:Q99816}; Peripheral membrane protein {ECO:0000250|UniProtKB:Q99816}; Cytoplasmic side {ECO:0000250|UniProtKB:Q99816}. Late endosome membrane {ECO:0000250|UniProtKB:Q99816}; Peripheral membrane protein {ECO:0000250|UniProtKB:Q99816}. Cytoplasm, cytoskeleton, microtubule organizing center, centrosome {ECO:0000250|UniProtKB:Q99816}. Midbody, Midbody ring {ECO:0000250|UniProtKB:Q99816}. Nucleus {ECO:0000250|UniProtKB:Q99816}. Note=Mainly cytoplasmic. Membrane- associated when active and soluble when inactive. Nuclear localization is cell cycle-dependent. Interaction with CEP55 is required for localization to the midbody during cytokinesis {ECO:0000250|UniProtKB:Q99816}

Tissue Location

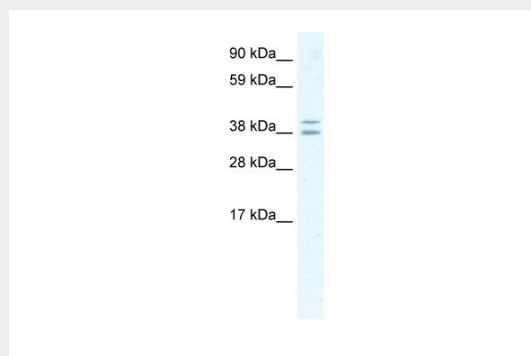
Ubiquitous. Higher expression in brain and mammary gland. Lower expression in liver and tumoral tissues

TSG101 antibody - middle region - Protocols

Provided below are standard protocols that you may find useful for product applications.

- [Western Blot](#)
- [Blocking Peptides](#)
- [Dot Blot](#)
- [Immunohistochemistry](#)
- [Immunofluorescence](#)
- [Immunoprecipitation](#)
- [Flow Cytometry](#)
- [Cell Culture](#)

TSG101 antibody - middle region - Images



WB Suggested Anti-TSG101 Antibody Titration: 2.5µg/ml

ELISA Titer: 1:62500

Positive Control: NIH/3T3 cell lysate

TSG101 antibody - middle region - References

Stefan, M., et al., (er) BMC Genomics 6, 157 (2005) Reconstitution and Storage: For short term use, store at 2-8°C up to 1 week. For long term storage, store at -20°C in small aliquots to prevent freeze-thaw cycles.