

PPP1R13L antibody - middle region
Rabbit Polyclonal Antibody
Catalog # AI12077**Specification**

PPP1R13L antibody - middle region - Product Information

| | |
|-------------------|---|
| Application | WB |
| Primary Accession | Q8WUF5 |
| Other Accession | NM_006663 , NP_006654 |
| Reactivity | Human, Mouse, Rat, Rabbit, Horse, Bovine, Guinea Pig, Dog |
| Predicted | Human, Mouse, Rabbit, Horse, Bovine, Guinea Pig, Dog |
| Host | Rabbit |
| Clonality | Polyclonal |
| Calculated MW | 89kDa kDa |

PPP1R13L antibody - middle region - Additional Information**Gene ID** 10848**Alias Symbol** IASPP, NKIP1, RAI, iASPP gene, RAI4**Other Names**

RelA-associated inhibitor, Inhibitor of ASPP protein, Protein iASPP, NFkB-interacting protein 1, PPP1R13B-like protein, PPP1R13L, IASPP, NKIP1, PPP1R13BL, RAI

Format

Liquid. Purified antibody supplied in 1x PBS buffer with 0.09% (w/v) sodium azide and 2% sucrose.

Reconstitution & Storage

Add 50 ul of distilled water. Final anti-PPP1R13L antibody concentration is 1 mg/ml in PBS buffer with 2% sucrose. For longer periods of storage, store at 20°C. Avoid repeat freeze-thaw cycles.

Precautions

PPP1R13L antibody - middle region is for research use only and not for use in diagnostic or therapeutic procedures.

PPP1R13L antibody - middle region - Protein Information**Name** PPP1R13L**Synonyms** IASPP, NKIP1, PPP1R13BL, RAI**Function**

Regulator that plays a central role in regulation of apoptosis and transcription via its interaction with NF-kappa-B and p53/TP53 proteins. Blocks transcription of HIV-1 virus by inhibiting the action of both NF-kappa-B and SP1. Also inhibits p53/TP53 function, possibly by preventing the association between p53/TP53 and ASPP1 or ASPP2, and therefore suppressing the subsequent

activation of apoptosis (PubMed:12524540). Is involved in NF-kappa-B dependent negative regulation of inflammatory response (PubMed:28069640).

Cellular Location

Cytoplasm. Nucleus Note=Predominantly cytoplasmic but also nuclear

Tissue Location

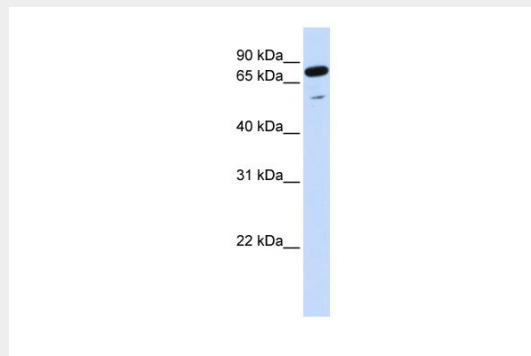
Highly expressed in heart, placenta and prostate. Weakly expressed in brain, liver, skeletal muscle, testis and peripheral blood leukocyte.

PPP1R13L antibody - middle region - Protocols

Provided below are standard protocols that you may find useful for product applications.

- [Western Blot](#)
- [Blocking Peptides](#)
- [Dot Blot](#)
- [Immunohistochemistry](#)
- [Immunofluorescence](#)
- [Immunoprecipitation](#)
- [Flow Cytometry](#)
- [Cell Culture](#)

PPP1R13L antibody - middle region - Images



WB Suggested Anti-PPP1R13L Antibody Titration: 0.2-1 µg/ml

ELISA Titer: 1:312500

Positive Control: Human Lung

PPP1R13L antibody - middle region - References

Tomoda,K.,(2008)CancerSci.99(3),615-622ReconstitutionandStorage:Forshorttermuse,storeat2-8Cupto1week.Forlongtermstorage,storeat-20Cinsmallaliquotstopreventfreeze-thawcycles.