

Gja10 antibody - N-terminal region
Rabbit Polyclonal Antibody
Catalog # AI12166**Specification**

Gja10 antibody - N-terminal region - Product Information

Application	WB
Primary Accession	O9WUS4
Other Accession	NM_010289 , NP_034419
Reactivity	Human, Mouse, Rat, Rabbit, Zebrafish, Pig, Horse, Bovine, Dog
Predicted Host	Rat, Pig, Chicken, Bovine, Dog
Clonality	Rabbit
Calculated MW	Polyclonal 57kDa KDa

Gja10 antibody - N-terminal region - Additional Information

Alias Symbol	Cx-57, Cx59
Other Names	
Gap junction alpha-10 protein, Connexin-57, Cx57, Gja10	

Format

Liquid. Purified antibody supplied in 1x PBS buffer with 0.09% (w/v) sodium azide and 2% sucrose.

Reconstitution & Storage

Add 50 ul of distilled water. Final anti-Gja10 antibody concentration is 1 mg/ml in PBS buffer with 2% sucrose. For longer periods of storage, store at 20°C. Avoid repeat freeze-thaw cycles.

Precautions

Gja10 antibody - N-terminal region is for research use only and not for use in diagnostic or therapeutic procedures.

Gja10 antibody - N-terminal region - Protein Information

Name Gja10

Function

One gap junction consists of a cluster of closely packed pairs of transmembrane channels, the connexons, through which materials of low MW diffuse from one cell to a neighboring cell. Involved in tracer coupling between horizontal cells of the retina. May play a role in the regulation of horizontal cell patterning.

Cellular Location

Cell membrane; Multi-pass membrane protein. Cell junction, gap junction

Tissue Location

Low levels were detected in skin, heart, kidney, testis, ovary, intestine. Expression not detected in

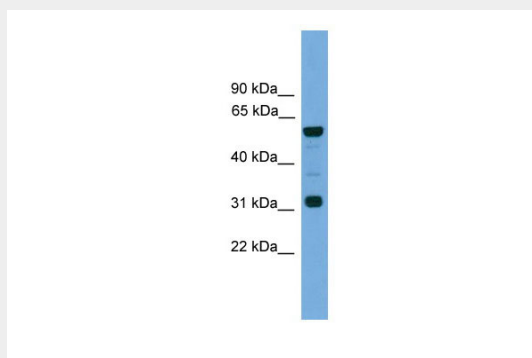
brain, sciatic nerve or liver. According to PubMed:15147297 expression is detected only in horizontal cells in the inner nuclear layer of the retina and not in other neurons of the central nervous system or tissues. Detected in the outer plexiform layer of the retina (at protein level)

Gja10 antibody - N-terminal region - Protocols

Provided below are standard protocols that you may find useful for product applications.

- [Western Blot](#)
- [Blocking Peptides](#)
- [Dot Blot](#)
- [Immunohistochemistry](#)
- [Immunofluorescence](#)
- [Immunoprecipitation](#)
- [Flow Cytometry](#)
- [Cell Culture](#)

Gja10 antibody - N-terminal region - Images



WB Suggested Anti-Gja10 Antibody Titration: 0.2-1 µg/ml

Positive Control: Mouse Heart