

MPDZ antibody - middle region
Rabbit Polyclonal Antibody
Catalog # AI12182**Specification**

MPDZ antibody - middle region - Product Information

Application	WB, IHC
Primary Accession	O75970
Other Accession	NM_003829 , NP_003820
Reactivity	Human, Mouse, Rat, Rabbit, Horse, Bovine, Guinea Pig, Dog
Predicted	Human, Mouse, Rat, Rabbit, Pig, Chicken, Horse, Bovine, Guinea Pig, Dog
Host	Rabbit
Clonality	Polyclonal
Calculated MW	218kDa KDa

MPDZ antibody - middle region - Additional Information**Gene ID 8777**

Alias Symbol	DKFZp781P216, FLJ25909, FLJ34626, FLJ90240, MUPP1
--------------	---------------------------------------------------

Other Names

Multiple PDZ domain protein, Multi-PDZ domain protein 1, MPDZ, MUPP1

Format

Liquid. Purified antibody supplied in 1x PBS buffer with 0.09% (w/v) sodium azide and 2% sucrose.

Reconstitution & Storage

Add 50 ul of distilled water. Final anti-MPDZ antibody concentration is 1 mg/ml in PBS buffer with 2% sucrose. For longer periods of storage, store at 20°C. Avoid repeat freeze-thaw cycles.

Precautions

MPDZ antibody - middle region is for research use only and not for use in diagnostic or therapeutic procedures.

MPDZ antibody - middle region - Protein Information**Name MPDZ****Synonyms MUPP1****Function**

Member of the NMDAR signaling complex that may play a role in control of AMPAR potentiation and synaptic plasticity in excitatory synapses (PubMed:11150294, PubMed:15312654). Promotes

clustering of HT2RC at the cell surface (By similarity).

Cellular Location

Cell membrane; Peripheral membrane protein; Cytoplasmic side. Apical cell membrane; Peripheral membrane protein; Cytoplasmic side. Postsynaptic density. Cell projection, dendrite. Cell junction, tight junction. Synapse. Synapse, synaptosome Note=Colocalizes with HTR2C on the apical membrane of epithelial choroid plexus cells (By similarity). Highly enriched in postsynaptic densities (PSD). Localized to punctae on dendrites of hippocampal neurons and colocalizes with the synaptic marker DLG4. Localized mainly in the Schmidt-Lanterman incisures of myelinating Schwann cells (By similarity). In the retina, localizes to the sub-apical region adjacent to the adherens junction complex at the outer limiting membrane Enriched at the tight junctions of epithelial cells. Association to the tight junctions depends on CXADR. {ECO:0000250, ECO:0000250|UniProtKB:O55164}

Tissue Location

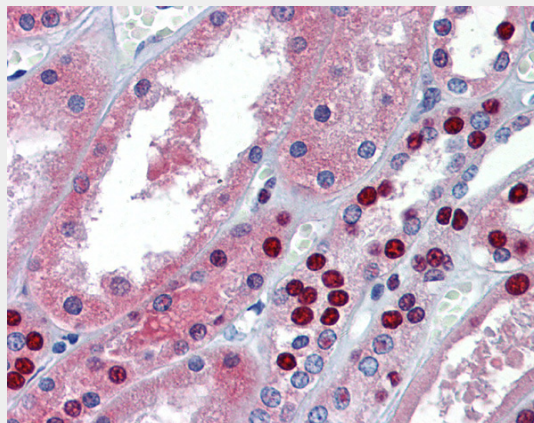
Expressed in heart, brain, placenta, liver, skeletal muscle, kidney and pancreas.

MPDZ antibody - middle region - Protocols

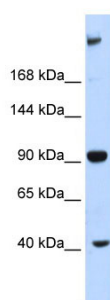
Provided below are standard protocols that you may find useful for product applications.

- [Western Blot](#)
- [Blocking Peptides](#)
- [Dot Blot](#)
- [Immunohistochemistry](#)
- [Immunofluorescence](#)
- [Immunoprecipitation](#)
- [Flow Cytometry](#)
- [Cell Culture](#)

MPDZ antibody - middle region - Images



Kidney



WB Suggested Anti-MPDZ Antibody Titration: 0.2-1 μ g/ml
ELISA Titer: 1:312500
Positive Control: Human Liver