

**SYMPK antibody - N-terminal region**  
**Rabbit Polyclonal Antibody**  
**Catalog # AI12183****Specification**

---

**SYMPK antibody - N-terminal region - Product Information**

Application	WB, IHC
Primary Accession	<a href="#">Q92797</a>
Other Accession	<a href="#">NM_004819</a> , <a href="#">NP_004810</a>
Reactivity	Human, Mouse, Rat, Rabbit, Pig, Horse, Bovine, Guinea Pig, Dog
Predicted	Human, Mouse, Rabbit, Pig, Horse, Bovine, Guinea Pig, Dog
Host	Rabbit
Clonality	Polyclonal
Calculated MW	141kDa KDa

**SYMPK antibody - N-terminal region - Additional Information****Gene ID** 8189

Alias Symbol	FLJ27092, SPK, SYM
<b>Other Names</b>	
Symplekin, SYMPK, SPK	

**Format**

Liquid. Purified antibody supplied in 1x PBS buffer with 0.09% (w/v) sodium azide and 2% sucrose.

**Reconstitution & Storage**

Add 50 ul of distilled water. Final anti-SYMPK antibody concentration is 1 mg/ml in PBS buffer with 2% sucrose. For longer periods of storage, store at 20°C. Avoid repeat freeze-thaw cycles.

**Precautions**

SYMPK antibody - N-terminal region is for research use only and not for use in diagnostic or therapeutic procedures.

**SYMPK antibody - N-terminal region - Protein Information****Name** SYMPK**Synonyms** SPK**Function**

Scaffold protein that functions as a component of a multimolecular complex involved in histone mRNA 3'-end processing. Specific component of the tight junction (TJ) plaque, but might not be an exclusively junctional component. May have a house-keeping rule. Is involved in pre-mRNA polyadenylation. Enhances SSU72 phosphatase activity.

**Cellular Location**

Cytoplasm, cytoskeleton. Cell junction, tight junction. Cell membrane; Peripheral membrane protein; Cytoplasmic side Cell junction. Nucleus, nucleoplasm. Note=Cytoplasmic face of adhesion plaques (major) and nucleoplasm (minor) (in cells with TJ). Nucleoplasm (in cells without TJ). Nuclear bodies of heat-stressed cells Colocalizes with HSF1 in nuclear stress bodies upon heat shock (PubMed:14707147).

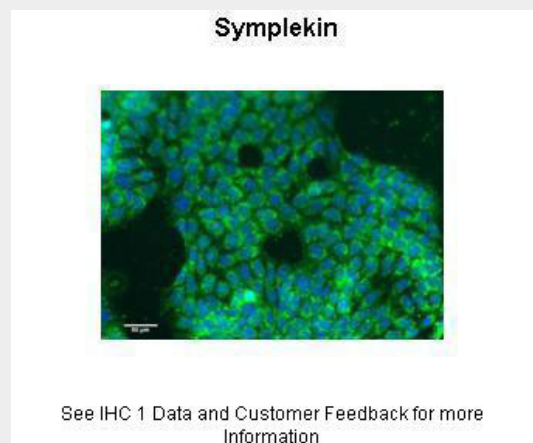
**Tissue Location**

In testis, expressed in polar epithelia and Sertoli cells but not in vascular endothelia. The protein is detected in stomach, duodenum, pancreas, liver, fetal brain, carcinomas, lens-forming cells, fibroblasts, lymphocytes, lymphoma cells, erythroleukemia cells but not in endothelium of vessels, epidermis, intercalated disks, Purkinje fiber cells of the heart and lymph node

**SYMPK antibody - N-terminal region - Protocols**

Provided below are standard protocols that you may find useful for product applications.

- [Western Blot](#)
- [Blocking Peptides](#)
- [Dot Blot](#)
- [Immunohistochemistry](#)
- [Immunofluorescence](#)
- [Immunoprecipitation](#)
- [Flow Cytometry](#)
- [Cell Culture](#)

**SYMPK antibody - N-terminal region - Images**

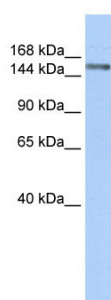
Sample Type : Human HT29 cells

Primary Antibody Dilution : 1:50

Secondary Antibody : Donkey anti Rabbit-Alexa Fluor 488 Secondary Antibody Dilution : 1:500

Color/Signal Descriptions : Green: Symplekin Blue: DAPI

Gene Name : SYMPK Submitted by : Louise Lagerqvist (PhD), Oncology Department, Institute of Functional Genomics, Montpellier, France.



WB Suggested Anti-SYMPK Antibody Titration: 0.2-1  $\mu$ g/ml

ELISA Titer: 1:1562500

Positive Control: Human Liver