

Pard6b Antibody - N-terminal region
Rabbit Polyclonal Antibody
Catalog # AI12186**Specification**

Pard6b Antibody - N-terminal region - Product Information

Application	WB
Primary Accession	O9JK83
Other Accession	NM_021409 , NP_067384
Reactivity	Human, Mouse, Rat, Rabbit, Zebrafish, Horse, Bovine, Guinea Pig, Dog
Predicted	Human, Mouse, Rat, Rabbit, Zebrafish, Pig, Horse, Bovine, Guinea Pig, Dog
Host	Rabbit
Clonality	Polyclonal
Calculated MW	40kDa kDa

Pard6b Antibody - N-terminal region - Additional Information**Gene ID** 58220**Alias Symbol** AV025615, Par6b**Other Names**

Partitioning defective 6 homolog beta, PAR-6 beta, PAR-6B, Pard6b, Par6b

Format

Liquid. Purified antibody supplied in 1x PBS buffer with 0.09% (w/v) sodium azide and 2% sucrose.

Reconstitution & Storage

Add 50 µl of distilled water. Final Anti-Pard6b antibody concentration is 1 mg/ml in PBS buffer with 2% sucrose. For longer periods of storage, store at -20°C. Avoid repeat freeze-thaw cycles.

Precautions

Pard6b Antibody - N-terminal region is for research use only and not for use in diagnostic or therapeutic procedures.

Pard6b Antibody - N-terminal region - Protein Information**Name** Pard6b**Synonyms** Par6b**Function**

Adapter protein involved in asymmetrical cell division and cell polarization processes. Probably involved in formation of epithelial tight junctions. Association with PARD3 may prevent the interaction of PARD3 with F11R/JAM1, thereby preventing tight junction assembly. The PARD6-PARD3 complex links GTP-bound Rho small GTPases to atypical protein kinase C proteins.

Cellular Location

Cytoplasm. Cell membrane. Cell junction, tight junction. Note=Colocalizes with active form of CDC42 or RAC1 at membrane ruffles. Also localizes to tight junctions

Tissue Location

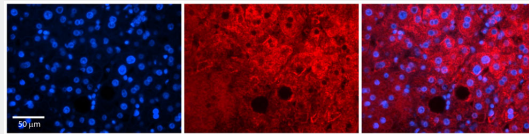
Expressed in pancreas and in both adult and fetal kidney. Weakly expressed in placenta and lung. Not expressed in other tissues

Pard6b Antibody - N-terminal region - Protocols

Provided below are standard protocols that you may find useful for product applications.

- [Western Blot](#)
- [Blocking Peptides](#)
- [Dot Blot](#)
- [Immunohistochemistry](#)
- [Immunofluorescence](#)
- [Immunoprecipitation](#)
- [Flow Cytometry](#)
- [Cell Culture](#)

Pard6b Antibody - N-terminal region - Images



Rabbit Anti-Pard6b Antibody

Formalin Fixed Paraffin Embedded Tissue: Human Adult liver Observed Staining: Cytoplasmic,Membrane

Primary Antibody

Concentration: 1:600

Secondary Antibody: Donkey anti-Rabbit-Cy2/3

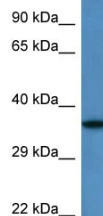
Secondary Antibody

Concentration: 1:200

Magnification: 20X

Exposure Time: 0.5 - 2.0 sec

Protocol located in Reviews and Data.



Host: Rabbit

Target Name: Pard6b

Sample Tissue: Mouse Heart lysates
Antibody Dilution: 1.0µg/ml