

**RBBP6 antibody - N-terminal region**  
**Rabbit Polyclonal Antibody**  
**Catalog # AI12215****Specification**

---

**RBBP6 antibody - N-terminal region - Product Information**

|                   |   |
|-------------------|---|
| Application       | WB  |
| Primary Accession | <a href="#">Q7Z6E9</a>                                |
| Other Accession   | <a href="#">NM_006910</a> , <a href="#">NP_008841</a> |
| Reactivity        | Human, Mouse, Rat, Rabbit, Pig, Bovine, Dog           |
| Predicted         | Human, Mouse, Rat, Rabbit, Pig, Bovine, Dog           |
| Host              | Rabbit  |
| Clonality         | Polyclonal  |
| Calculated MW     | 201kDa KDa  |

**RBBP6 antibody - N-terminal region - Additional Information****Gene ID** 5930**Alias Symbol** DKFZp686P0638, DKFZp761B2423, MY038, P2P-R, RBQ-1, PACT, SNAMA**Other Names**

E3 ubiquitin-protein ligase RBBP6, 6.3.2.-, Proliferation potential-related protein, Protein P2P-R, Retinoblastoma-binding Q protein 1, RBQ-1, Retinoblastoma-binding protein 6, p53-associated cellular protein of testis, RBBP6, P2PR, PACT, RBQ1

**Format**

Liquid. Purified antibody supplied in 1x PBS buffer with 0.09% (w/v) sodium azide and 2% sucrose.

**Reconstitution & Storage**

Add 50 ul of distilled water. Final anti-RBBP6 antibody concentration is 1 mg/ml in PBS buffer with 2% sucrose. For longer periods of storage, store at 20°C. Avoid repeat freeze-thaw cycles.

**Precautions**

RBBP6 antibody - N-terminal region is for research use only and not for use in diagnostic or therapeutic procedures.

**RBBP6 antibody - N-terminal region - Protein Information****Name** RBBP6**Synonyms** P2PR, PACT, RBQ1**Function**

E3 ubiquitin-protein ligase which promotes ubiquitination of YBX1, leading to its degradation by the proteasome (PubMed:<a href="http://www.uniprot.org/citations/18851979">

target="\_blank">18851979</a>). May play a role as a scaffold protein to promote the assembly of the p53/TP53-MDM2 complex, resulting in increase of MDM2-mediated ubiquitination and degradation of p53/TP53; may function as negative regulator of p53/TP53, leading to both apoptosis and cell growth (By similarity). Regulates DNA-replication and the stability of chromosomal common fragile sites (CFSs) in a ZBTB38- and MCM10-dependent manner. Controls ZBTB38 protein stability and abundance via ubiquitination and proteasomal degradation, and ZBTB38 in turn negatively regulates the expression of MCM10 which plays an important role in DNA-replication (PubMed:<a href="http://www.uniprot.org/citations/24726359" target="\_blank">24726359</a>).

#### Cellular Location

Nucleus, nucleolus. Chromosome. Cytoplasm, cytoskeleton, microtubule organizing center, centrosome Note=Colocalizes with mitotic chromosomes. Colocalizes with NEK6 in the centrosome

#### Tissue Location

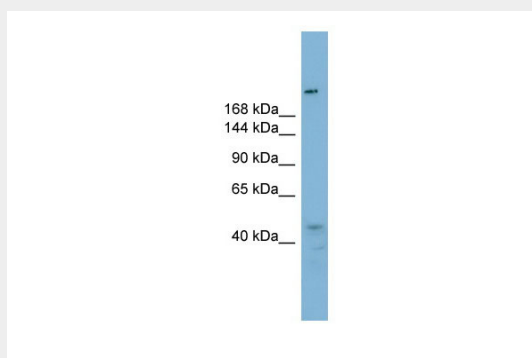
Highly expressed in the placenta and testis. Expressed at lower levels in the brain, heart, kidney, liver and lung Overexpressed in esophageal cancer.

### RBBP6 antibody - N-terminal region - Protocols

Provided below are standard protocols that you may find useful for product applications.

- [Western Blot](#)
- [Blocking Peptides](#)
- [Dot Blot](#)
- [Immunohistochemistry](#)
- [Immunofluorescence](#)
- [Immunoprecipitation](#)
- [Flow Cytometry](#)
- [Cell Culture](#)

### RBBP6 antibody - N-terminal region - Images



WB Suggested Anti-RBBP6 Antibody Titration: 0.2-1 µg/ml

Positive Control: NCI-H226 cell lysate