

Fbxl3 antibody - C-terminal region
Rabbit Polyclonal Antibody
Catalog # AI12218**Specification**

Fbxl3 antibody - C-terminal region - Product Information

Application	WB
Primary Accession	Q8C4V4
Other Accession	NM_015822 , NP_056637
Reactivity	Human, Mouse, Rat, Rabbit, Zebrafish, Pig, Sheep, Horse, Bovine, Guinea Pig, Dog
Predicted	Human, Mouse, Rat, Rabbit, Zebrafish, Pig, Chicken, Sheep, Horse, Bovine, Guinea Pig, Dog
Host	Rabbit
Clonality	Polyclonal
Calculated MW	49kDa KDa

Fbxl3 antibody - C-terminal region - Additional Information**Gene ID** 50789**Alias Symbol** AU041772, AW212966, FBK, Fbl3a, Fbxl3a, Ovtm**Other Names**

F-box/LRR-repeat protein 3, F-box and leucine-rich repeat protein 3A, F-box/LRR-repeat protein 3A, Protein after-hours, Protein overtime, Fbxl3, Afh, Fbl3a, Fbxl3a, Ovtm

Format

Liquid. Purified antibody supplied in 1x PBS buffer with 0.09% (w/v) sodium azide and 2% sucrose.

Reconstitution & Storage

Add 50 ul of distilled water. Final anti-Fbxl3 antibody concentration is 1 mg/ml in PBS buffer with 2% sucrose. For longer periods of storage, store at 20°C. Avoid repeat freeze-thaw cycles.

Precautions

Fbxl3 antibody - C-terminal region is for research use only and not for use in diagnostic or therapeutic procedures.

Fbxl3 antibody - C-terminal region - Protein Information**Name** Fbxl3**Synonyms** Afh, Fbl3a, Fbxl3a, Ovtm**Function**

Substrate-recognition component of the SCF(FBXL3) E3 ubiquitin ligase complex involved in circadian rhythm function. Plays a key role in the maintenance of both the speed and the

robustness of the circadian clock oscillation. The SCF(FBXL3) complex mainly acts in the nucleus and mediates ubiquitination and subsequent degradation of CRY1 and CRY2. Activity of the SCF(FBXL3) complex is counteracted by the SCF(FBXL21) complex.

Cellular Location

Nucleus. Cytoplasm. Note=Predominantly nuclear

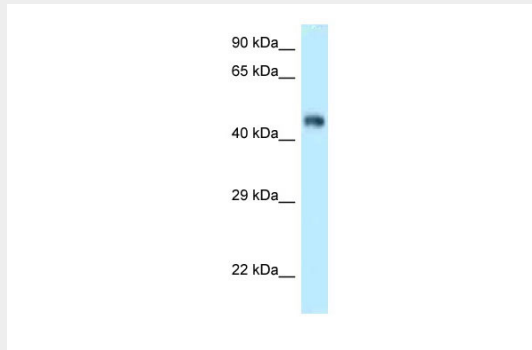
Tissue Location

Ubiquitously expressed but enriched in brain. Diffusely expressed in the suprachiasmatic nucleus, SCN

Fbxl3 antibody - C-terminal region - Protocols

Provided below are standard protocols that you may find useful for product applications.

- [Western Blot](#)
- [Blocking Peptides](#)
- [Dot Blot](#)
- [Immunohistochemistry](#)
- [Immunofluorescence](#)
- [Immunoprecipitation](#)
- [Flow Cytometry](#)
- [Cell Culture](#)

Fbxl3 antibody - C-terminal region - Images

WB Suggested Anti-Fbxl3 Antibody Titration: 1.0 µg/ml

Positive Control: Mouse Kidney