

RNF128 antibody - C-terminal region
Rabbit Polyclonal Antibody
Catalog # AI12260**Specification**

RNF128 antibody - C-terminal region - Product Information

Application	WB
Primary Accession	Q8TEB7
Other Accession	NM_194463 , NP_919445
Reactivity	Human, Mouse, Rat, Rabbit, Pig, Horse, Bovine, Guinea Pig, Dog
Predicted Host	Human, Mouse, Rat, Dog
Clonality	Rabbit
Calculated MW	Polyclonal 47kDa KDa

RNF128 antibody - C-terminal region - Additional Information**Gene ID** 79589**Alias Symbol** **FLJ23516, GRAIL****Other Names**

E3 ubiquitin-protein ligase RNF128, 6.3.2.-, Gene related to anergy in lymphocytes protein, GRAIL, RING finger protein 128, RNF128

Format

Liquid. Purified antibody supplied in 1x PBS buffer with 0.09% (w/v) sodium azide and 2% sucrose.

Reconstitution & Storage

Add 100 ul of distilled water. Final anti-RNF128 antibody concentration is 1 mg/ml in PBS buffer with 2% sucrose. For longer periods of storage, store at 20°C. Avoid repeat freeze-thaw cycles.

Precautions

RNF128 antibody - C-terminal region is for research use only and not for use in diagnostic or therapeutic procedures.

RNF128 antibody - C-terminal region - Protein Information**Name** RNF128**Function**

E3 ubiquitin-protein ligase that catalyzes 'Lys-48'- and 'Lys-63'-linked polyubiquitin chains formation. Functions as an inhibitor of cytokine gene transcription. Inhibits IL2 and IL4 transcription, thereby playing an important role in the induction of the anergic phenotype, a long-term stable state of T-lymphocyte unresponsiveness to antigenic stimulation associated with the blockade of interleukin production. Ubiquitinates ARPC5 with 'Lys-48' linkages and COR1A with 'Lys-63' linkages leading to their degradation, down- regulation of these cytoskeletal components results in impaired lamellipodium formation and reduced accumulation of F-actin at the

immunological synapse. Functions in the patterning of the dorsal ectoderm; sensitizes ectoderm to respond to neural-inducing signals.

Cellular Location

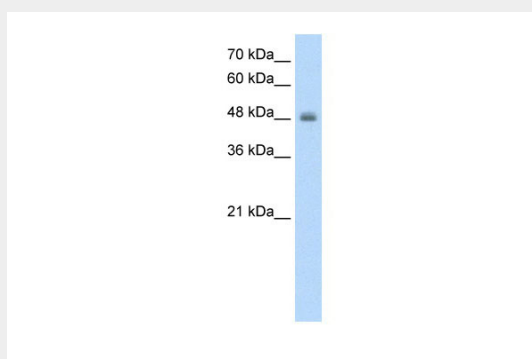
Endomembrane system; Single-pass membrane protein. Cytoplasm, cytoskeleton. Cytoplasm, perinuclear region. Note=Localized in an asymmetric perinuclear punctate manner. Localizes to the internal pool of the transferrin recycling endosomal pathway. Partially colocalized with the endoplasmic reticulum resident HSPA5, with Golgi resident STX5, and with the late endosomal GTPase RAB7A (By similarity).

RNF128 antibody - C-terminal region - Protocols

Provided below are standard protocols that you may find useful for product applications.

- [Western Blot](#)
- [Blocking Peptides](#)
- [Dot Blot](#)
- [Immunohistochemistry](#)
- [Immunofluorescence](#)
- [Immunoprecipitation](#)
- [Flow Cytometry](#)
- [Cell Culture](#)

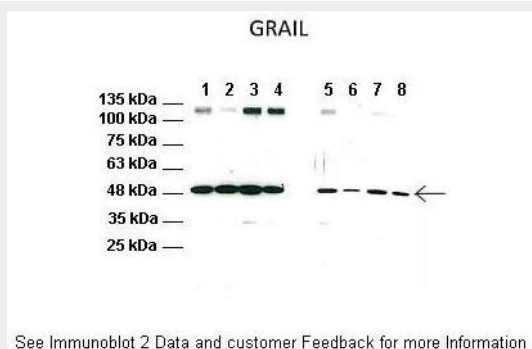
RNF128 antibody - C-terminal region - Images



WB Suggested Anti-RNF128 Antibody Titration: 1.25µg/ml

Positive Control: HepG2 cell lysate

RNF128 is supported by BioGPS gene expression data to be expressed in HepG2



Lanes: 1: CD4 T cell lysate
from WT mice, 2: CD4 T cell lysate

from WT mice treated with anti-CD3/CD28, 3: CD4 T cell lysate
from WT mice treated with FK506, 4: CD4 T cell lysate
from WT mice treated with anti-CD3/CD28 and FK506, 5: CD4 T cell lysate
from TRPV1 KO mice, 6: CD4 T cell lysate
from TRPV1 KO mice treated with anti-CD3/CD28, 7: CD4 T cell lysate
from TRPV1 KO mice treated with FK506, 8: CD4 T cell lysate
from TRPV1 KO mice treated with anti-CD3/CD28 and FK506.

Primary Antibody Dilution: 1:1000

Secondary Antibody: Anti-rabbit HRP

Secondary Antibody Dilution: 1:10,000

Gene Name: RNF128

Submitted by: Christine Quinley, UCSD