

**Decr2 antibody - C-terminal region**  
**Rabbit Polyclonal Antibody**  
**Catalog # AI12298****Specification**

---

**Decr2 antibody - C-terminal region - Product Information**

Application	WB
Primary Accession	<a href="#">O9WV68</a>
Other Accession	<a href="#">NM_011933</a> , <a href="#">NP_036063</a>
Reactivity	Human, Mouse, Rat, Horse, Yeast, Guinea Pig, Dog
Predicted	Human, Mouse, Rat, Pig, Chicken, Guinea Pig, Dog
Host	Rabbit
Clonality	Polyclonal
Calculated MW	31kDa KDa

**Decr2 antibody - C-terminal region - Additional Information****Gene ID** 26378**Other Names**

Peroxisomal 2, 4-dienoyl-CoA reductase, 1.3.1.34, 2, 4-dienoyl-CoA reductase 2, Decr2, Pdcr

**Format**

Liquid. Purified antibody supplied in 1x PBS buffer with 0.09% (w/v) sodium azide and 2% sucrose.

**Reconstitution & Storage**

Add 50 ul of distilled water. Final anti-Decr2 antibody concentration is 1 mg/ml in PBS buffer with 2% sucrose. For longer periods of storage, store at 20°C. Avoid repeat freeze-thaw cycles.

**Precautions**

Decr2 antibody - C-terminal region is for research use only and not for use in diagnostic or therapeutic procedures.

**Decr2 antibody - C-terminal region - Protein Information****Name** Decr2**Synonyms** Pdcr**Function**

Auxiliary enzyme of beta-oxidation. Participates in the degradation of unsaturated fatty enoyl-CoA esters having double bonds in both even- and odd-numbered positions in peroxisome. Catalyzes the NADP-dependent reduction of 2,4-dienoyl-CoA to yield trans-3-enoyl-CoA. Has activity towards short and medium chain 2,4-dienoyl-CoAs, but also towards 2,4,7,10,13,16,19-docosaheptaenoyl-CoA, suggesting that it does not constitute a rate limiting step in the peroxisomal degradation of docosahexaenoic acid.

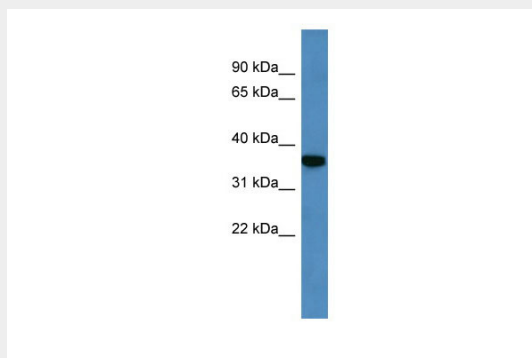
**Cellular Location**

Peroxisome.

**Decr2 antibody - C-terminal region - Protocols**

Provided below are standard protocols that you may find useful for product applications.

- [Western Blot](#)
- [Blocking Peptides](#)
- [Dot Blot](#)
- [Immunohistochemistry](#)
- [Immunofluorescence](#)
- [Immunoprecipitation](#)
- [Flow Cytometry](#)
- [Cell Culture](#)

**Decr2 antibody - C-terminal region - Images**

WB Suggested Anti-Decr2 Antibody Titration: 0.2-1  $\mu$ g/ml

ELISA Titer: 1:62500

Positive Control: Mouse Brain