

Abcc2 antibody - middle region
Rabbit Polyclonal Antibody
Catalog # AI12305**Specification**

Abcc2 antibody - middle region - Product Information

Application	WB
Primary Accession	Q8VI47
Other Accession	NM_013806 , NP_038834
Reactivity	Human, Mouse, Rat, Rabbit, Horse, Bovine, Guinea Pig, Dog
Predicted	Mouse, Horse, Bovine, Dog
Host	Rabbit
Clonality	Polyclonal
Calculated MW	174kDa KDa

Abcc2 antibody - middle region - Additional Information**Gene ID** 12780**Alias Symbol** AI173996, Abc30, Cmoat, Mrp2, cMRP**Other Names**

Canalicular multispecific organic anion transporter 1, ATP-binding cassette sub-family C member 2, Abcc2

Format

Liquid. Purified antibody supplied in 1x PBS buffer with 0.09% (w/v) sodium azide and 2% sucrose.

Reconstitution & Storage

Add 50 ul of distilled water. Final anti-Abcc2 antibody concentration is 1 mg/ml in PBS buffer with 2% sucrose. For longer periods of storage, store at 20°C. Avoid repeat freeze-thaw cycles.

Precautions

Abcc2 antibody - middle region is for research use only and not for use in diagnostic or therapeutic procedures.

Abcc2 antibody - middle region - Protein Information**Name** Abcc2 {ECO:0000312|MGI:MGI:1352447}**Function**

ATP-dependent transporter of the ATP-binding cassette (ABC) family that binds and hydrolyzes ATP to enable active transport of various substrates including many drugs, toxicants and endogenous compound across cell membranes. Transports a wide variety of conjugated organic anions such as sulfate-, glucuronide- and glutathione (GSH)- conjugates of endo- and xenobiotics substrates. Mediates hepatobiliary excretion of mono- and bis-glucuronidated bilirubin molecules and therefore play an important role in bilirubin detoxification. Mediates also hepatobiliary excretion of others glucuronide conjugates such as 17beta-estradiol 17-glucosiduronic acid and leukotriene C4.

Transports sulfated bile salt such as tauroolithocholate sulfate. Transports various anticancer drugs, such as anthracycline, vinca alkaloid and methotrexate and HIV-drugs such as protease inhibitors.

Cellular Location

Apical cell membrane {ECO:0000250|UniProtKB:Q92887}; Multi-pass membrane protein

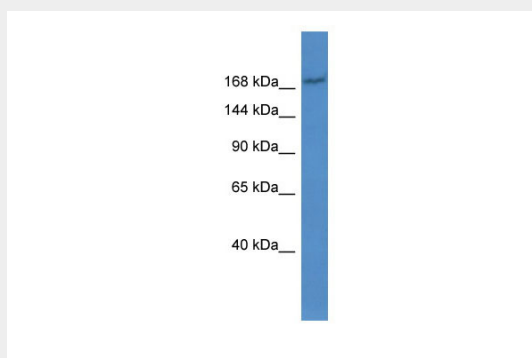
Tissue Location

Expressed in liver..

Abcc2 antibody - middle region - Protocols

Provided below are standard protocols that you may find useful for product applications.

- [Western Blot](#)
- [Blocking Peptides](#)
- [Dot Blot](#)
- [Immunohistochemistry](#)
- [Immunofluorescence](#)
- [Immunoprecipitation](#)
- [Flow Cytometry](#)
- [Cell Culture](#)

Abcc2 antibody - middle region - Images

WB Suggested Anti-Abcc2 Antibody Titration: 0.2-1 µg/ml

ELISA Titer: 1:312500

Positive Control: Mouse Spleen