

**Slc5a2 antibody - middle region**  
**Rabbit Polyclonal Antibody**  
**Catalog # AI12331****Specification**

---

**Slc5a2 antibody - middle region - Product Information**

Application	WB
Primary Accession	<a href="#">O923I7</a>
Other Accession	<a href="#">NM_133254</a> , <a href="#">NP_573517</a>
Reactivity	Human, Mouse, Rat, Rabbit, Pig, Horse, Bovine, Guinea Pig, Dog
Predicted Host	Human, Mouse, Rat, Pig, Bovine, Dog
Clonality	Rabbit
Calculated MW	Polyclonal 73kDa KDa

**Slc5a2 antibody - middle region - Additional Information****Gene ID** 246787

Alias Symbol	<b>Sglt2</b>
<b>Other Names</b>	

Sodium/glucose cotransporter 2, Na(+)/glucose cotransporter 2, Low affinity sodium-glucose cotransporter, Solute carrier family 5 member 2, Slc5a2, Sglt2

**Format**

Liquid. Purified antibody supplied in 1x PBS buffer with 0.09% (w/v) sodium azide and 2% sucrose.

**Reconstitution & Storage**

Add 50 ul of distilled water. Final anti-Slc5a2 antibody concentration is 1 mg/ml in PBS buffer with 2% sucrose. For longer periods of storage, store at 20°C. Avoid repeat freeze-thaw cycles.

**Precautions**

Slc5a2 antibody - middle region is for research use only and not for use in diagnostic or therapeutic procedures.

**Slc5a2 antibody - middle region - Protein Information****Name** Slc5a2**Function**

Electrogenic Na(+)-coupled sugar symporter that actively transports D-glucose at the plasma membrane, with a Na(+) to sugar coupling ratio of 1:1. Transporter activity is driven by a transmembrane Na(+) electrochemical gradient set by the Na(+)/K(+) pump (By similarity). Has a primary role in D-glucose reabsorption from glomerular filtrate across the brush border of the early proximal tubules of the kidney (PubMed:<a href="http://www.uniprot.org/citations/20616166" target="\_blank">20616166</a>).

**Cellular Location**

Apical cell membrane; Multi-pass membrane protein

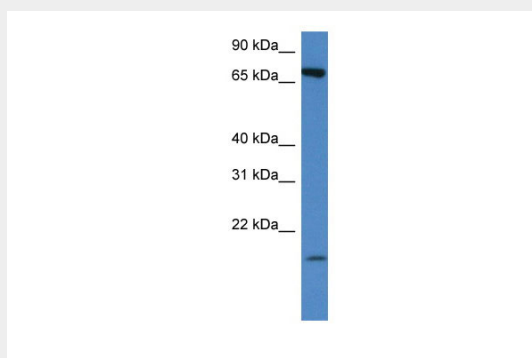
**Tissue Location**

Expressed in epithelial cells of early proximal tubules (at protein level).

**Slc5a2 antibody - middle region - Protocols**

Provided below are standard protocols that you may find useful for product applications.

- [Western Blot](#)
- [Blocking Peptides](#)
- [Dot Blot](#)
- [Immunohistochemistry](#)
- [Immunofluorescence](#)
- [Immunoprecipitation](#)
- [Flow Cytometry](#)
- [Cell Culture](#)

**Slc5a2 antibody - middle region - Images**

WB Suggested Anti-Slc5a2 Antibody Titration: 1.0 µg/ml  
Positive Control: Mouse Thymus