

SLC25A1 antibody - middle region
Rabbit Polyclonal Antibody
Catalog # AI12349**Specification**

SLC25A1 antibody - middle region - Product Information

Application	WB
Primary Accession	P32089
Other Accession	NM_005984 , NP_005975
Reactivity	Human, Mouse, Rat, Rabbit, Zebrafish, Pig, Horse, Yeast, Bovine, Guinea Pig, Dog
Predicted	Human, Mouse, Rabbit, Zebrafish, Pig, Chicken, Guinea Pig, Dog
Host	Rabbit
Clonality	Polyclonal
Calculated MW	34kDa kDa

SLC25A1 antibody - middle region - Additional Information**Gene ID** 29743**Alias Symbol** CTP, SLC20A3, SEA**Other Names**

Tricarboxylate transport protein, mitochondrial, Citrate transport protein, CTP, Solute carrier family 25 member 1, Tricarboxylate carrier protein, Slc25a1, Slc20a3

Format

Liquid. Purified antibody supplied in 1x PBS buffer with 0.09% (w/v) sodium azide and 2% sucrose.

Reconstitution & Storage

Add 50 ul of distilled water. Final anti-SLC25A1 antibody concentration is 1 mg/ml in PBS buffer with 2% sucrose. For longer periods of storage, store at 20°C. Avoid repeat freeze-thaw cycles.

Precautions

SLC25A1 antibody - middle region is for research use only and not for use in diagnostic or therapeutic procedures.

SLC25A1 antibody - middle region - Protein Information**Name** Slc25a1**Synonyms** Slc20a3**Function**

Mitochondrial electroneutral antiporter that exports citrate from the mitochondria into the cytosol in exchange for malate. Also able to mediate the exchange of citrate for isocitrate, phosphoenolpyruvate, cis-aconitate and to a lesser extent cis- aconitate, maleate and succinate (PubMed:2804096). In

the cytoplasm citrate is important in the regulation of glycolysis through a feedback mechanism and in the production of acetyl-CoA which is needed for the synthesis of fatty acids, sterols, prostaglandins, dolichol and coenzyme Q (CoQ). Required for proper neuromuscular junction formation (By similarity).

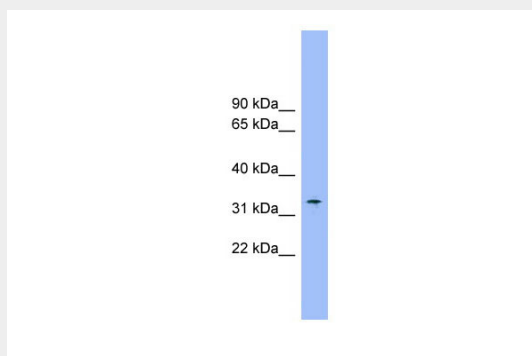
Cellular Location

Mitochondrion inner membrane; Multi-pass membrane protein

SLC25A1 antibody - middle region - Protocols

Provided below are standard protocols that you may find useful for product applications.

- [Western Blot](#)
- [Blocking Peptides](#)
- [Dot Blot](#)
- [Immunohistochemistry](#)
- [Immunofluorescence](#)
- [Immunoprecipitation](#)
- [Flow Cytometry](#)
- [Cell Culture](#)

SLC25A1 antibody - middle region - Images

WB Suggested Anti-SLC25A1 Antibody Titration: 0.2-1 µg/ml
Positive Control: Human Stomach