

**Slc25a15 antibody - N-terminal region**  
**Rabbit Polyclonal Antibody**  
**Catalog # AI12354****Specification**

---

**Slc25a15 antibody - N-terminal region - Product Information**

Application	WB
Primary Accession	<a href="#">O9WVD5</a>
Other Accession	<a href="#">NM_181325</a> , <a href="#">NP_851842</a>
Reactivity	Human, Mouse, Rat, Rabbit, Pig, Sheep, Horse, Bovine, Guinea Pig, Dog
Predicted	Human, Mouse, Rat, Pig, Chicken, Sheep, Bovine, Dog
Host	Rabbit
Clonality	Polyclonal
Calculated MW	33kDa KDa

**Slc25a15 antibody - N-terminal region - Additional Information****Gene ID** 18408**Alias Symbol** D630044L02Rik, Ornt1**Other Names**

Mitochondrial ornithine transporter 1, Solute carrier family 25 member 15, Slc25a15, Ornt1

**Format**

Liquid. Purified antibody supplied in 1x PBS buffer with 0.09% (w/v) sodium azide and 2% sucrose.

**Reconstitution & Storage**

Add 50 ul of distilled water. Final anti-Slc25a15 antibody concentration is 1 mg/ml in PBS buffer with 2% sucrose. For longer periods of storage, store at 20°C. Avoid repeat freeze-thaw cycles.

**Precautions**

Slc25a15 antibody - N-terminal region is for research use only and not for use in diagnostic or therapeutic procedures.

**Slc25a15 antibody - N-terminal region - Protein Information****Name** Slc25a15 {ECO:0000312|MGI:MGI:1342274}**Function**

Mitochondrial ornithine-citrulline antiporter. Catalyzes the exchange between cytosolic ornithine and mitochondrial citrulline plus an H(+), the proton compensates the positive charge of ornithine thus leading to an electroneutral transport. Plays a crucial role in the urea cycle, by connecting the cytosolic and the intramitochondrial reactions of the urea cycle. Lysine and arginine are also transported by the antiport mechanism (By similarity). In addition, catalyzes an electroneutral exchange of ornithine or lysine for H(+), a reaction driven by the pH gradient across the inner membrane (By similarity).

**Cellular Location**

Mitochondrion inner membrane {ECO:0000250|UniProtKB:Q12375}; Multi-pass membrane protein.  
Mitochondrion membrane {ECO:0000250|UniProtKB:A0A0G2K309}; Multi-pass membrane protein

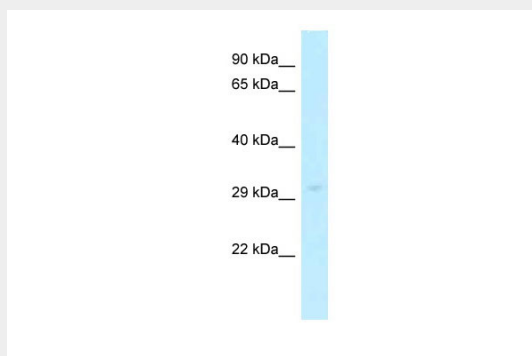
**Tissue Location**

Widely expressed, with highest levels in the liver, testis and kidney. In the brain, expressed at high levels in the hypothalamus.

**Slc25a15 antibody - N-terminal region - Protocols**

Provided below are standard protocols that you may find useful for product applications.

- [Western Blot](#)
- [Blocking Peptides](#)
- [Dot Blot](#)
- [Immunohistochemistry](#)
- [Immunofluorescence](#)
- [Immunoprecipitation](#)
- [Flow Cytometry](#)
- [Cell Culture](#)

**Slc25a15 antibody - N-terminal region - Images**

WB Suggested Anti-Slc25a15 Antibody Titration: 1.0 µg/ml  
Positive Control: Mouse Pancreas