

Slc37a2 antibody - middle region
Rabbit Polyclonal Antibody
Catalog # AI12386**Specification**

Slc37a2 antibody - middle region - Product Information

Application	WB
Primary Accession	O9WU81
Other Accession	NM_020258 , NP_064654
Reactivity	Human, Mouse, Rat, Rabbit, Zebrafish, Horse, Bovine, Guinea Pig, Dog
Predicted	Rat, Rabbit, Zebrafish, Chicken, Horse, Guinea Pig, Dog
Host	Rabbit
Clonality	Polyclonal
Calculated MW	55kDa kDa

Slc37a2 antibody - middle region - Additional Information**Gene ID** 56857**Alias Symbol** G3PP, Slc37a1, ci-2, ci2**Other Names**

Sugar phosphate exchanger 2, Solute carrier family 37 member 2, cAMP-inducible protein 2, Slc37a2, Ci2, Spx2

Format

Liquid. Purified antibody supplied in 1x PBS buffer with 0.09% (w/v) sodium azide and 2% sucrose.

Reconstitution & Storage

Add 50 ul of distilled water. Final anti-Slc37a2 antibody concentration is 1 mg/ml in PBS buffer with 2% sucrose. For longer periods of storage, store at 20°C. Avoid repeat freeze-thaw cycles.

Precautions

Slc37a2 antibody - middle region is for research use only and not for use in diagnostic or therapeutic procedures.

Slc37a2 antibody - middle region - Protein Information**Name** Slc37a2 {ECO:0000312|MGI:MGI:1929693}**Function**

Inorganic phosphate and glucose-6-phosphate antiporter. May transport cytoplasmic glucose-6-phosphate into the lumen of the endoplasmic reticulum and translocate inorganic phosphate into the opposite direction. Independent of a luminal glucose-6-phosphatase. May not play a role in homeostatic regulation of blood glucose levels.

Cellular Location

Endoplasmic reticulum membrane {ECO:0000250|UniProtKB:Q8TED4}; Multi-pass membrane protein

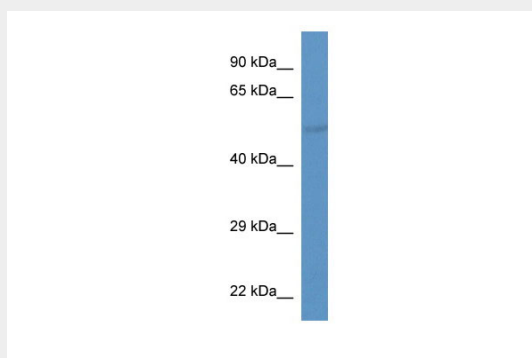
Tissue Location

Highly expressed in bone marrow derived macrophages, and weakly in spleen.

Slc37a2 antibody - middle region - Protocols

Provided below are standard protocols that you may find useful for product applications.

- [Western Blot](#)
- [Blocking Peptides](#)
- [Dot Blot](#)
- [Immunohistochemistry](#)
- [Immunofluorescence](#)
- [Immunoprecipitation](#)
- [Flow Cytometry](#)
- [Cell Culture](#)

Slc37a2 antibody - middle region - Images

WB Suggested Anti-Slc37a2 Antibody Titration: 1.0 µg/ml
Positive Control: Mouse Liver