

**SDCBP antibody - middle region**  
**Rabbit Polyclonal Antibody**  
**Catalog # AI12442****Specification**

---

**SDCBP antibody - middle region - Product Information**

Application	WB, IHC
Primary Accession	<a href="#">O00560</a>
Other Accession	<a href="#">NM_001007067</a> , <a href="#">NP_001007068</a>
Reactivity	Human, Mouse, Rat, Rabbit, Zebrafish, Pig, Horse, Bovine, Guinea Pig, Dog
Predicted	Human, Mouse, Rabbit, Zebrafish, Pig, Chicken, Horse, Dog
Host	Rabbit
Clonality	Polyclonal
Calculated MW	32kDa KDa

**SDCBP antibody - middle region - Additional Information****Gene ID** 6386**Alias Symbol** **MDA-9, ST1, SYCL, TACIP18****Other Names**

Syntenin-1, Melanoma differentiation-associated protein 9, MDA-9, Pro-TGF-alpha cytoplasmic domain-interacting protein 18, TACIP18, Scaffold protein Pbp1, Syndecan-binding protein 1, SDCBP, MDA9, SYCL

**Format**

Liquid. Purified antibody supplied in 1x PBS buffer with 0.09% (w/v) sodium azide and 2% sucrose.

**Reconstitution & Storage**

Add 100 ul of distilled water. Final anti-SDCBP antibody concentration is 1 mg/ml in PBS buffer with 2% sucrose. For longer periods of storage, store at 20°C. Avoid repeat freeze-thaw cycles.

**Precautions**

SDCBP antibody - middle region is for research use only and not for use in diagnostic or therapeutic procedures.

**SDCBP antibody - middle region - Protein Information****Name** SDCBP**Synonyms** MDA9, SYCL**Function**

Multifunctional adapter protein involved in diverse array of functions including trafficking of transmembrane proteins, neuro and immunomodulation, exosome biogenesis, and tumorigenesis (PubMed:<a href="http://www.uniprot.org/citations/26291527" target="\_blank">26291527</a>).

Positively regulates TGFB1-mediated SMAD2/3 activation and TGFB1-induced epithelial-to-mesenchymal transition (EMT) and cell migration in various cell types. May increase TGFB1 signaling by enhancing cell-surface expression of TGFR1 by preventing the interaction between TGFR1 and CAV1 and subsequent CAV1-dependent internalization and degradation of TGFR1 (PubMed:<a href="http://www.uniprot.org/citations/25893292" target="\_blank">25893292</a>). In concert with SDC1/4 and PDCD6IP, regulates exosome biogenesis (PubMed:<a href="http://www.uniprot.org/citations/22660413" target="\_blank">22660413</a>). Regulates migration, growth, proliferation, and cell cycle progression in a variety of cancer types (PubMed:<a href="http://www.uniprot.org/citations/26539120" target="\_blank">26539120</a>). In adherens junctions may function to couple syndecans to cytoskeletal proteins or signaling components. Seems to couple transcription factor SOX4 to the IL-5 receptor (IL5RA) (PubMed:<a href="http://www.uniprot.org/citations/11498591" target="\_blank">11498591</a>). May also play a role in vesicular trafficking (PubMed:<a href="http://www.uniprot.org/citations/11179419" target="\_blank">11179419</a>). Seems to be required for the targeting of TGFA to the cell surface in the early secretory pathway (PubMed:<a href="http://www.uniprot.org/citations/10230395" target="\_blank">10230395</a>).

### Cellular Location

Cell junction, focal adhesion. Cell junction, adherens junction. Cell membrane; Peripheral membrane protein. Endoplasmic reticulum membrane; Peripheral membrane protein. Nucleus. Melanosome. Cytoplasm, cytosol. Cytoplasm, cytoskeleton. Secreted, extracellular exosome. Membrane raft. Note=Mainly membrane-associated Localized to adherens junctions, focal adhesions and endoplasmic reticulum. Colocalized with actin stress fibers. Also found in the nucleus. Identified by mass spectrometry in melanosome fractions from stage I to stage IV. Associated to the plasma membrane in the presence of FZD7 and phosphatidylinositol 4,5-bisphosphate (PIP2) (PubMed:27386966).

### Tissue Location

Expressed in lung cancers, including adenocarcinoma, squamous cell carcinoma and small-cell carcinoma (at protein level) (PubMed:25893292). Widely expressed. Expressed in fetal kidney, liver, lung and brain. In adult highest expression in heart and placenta.

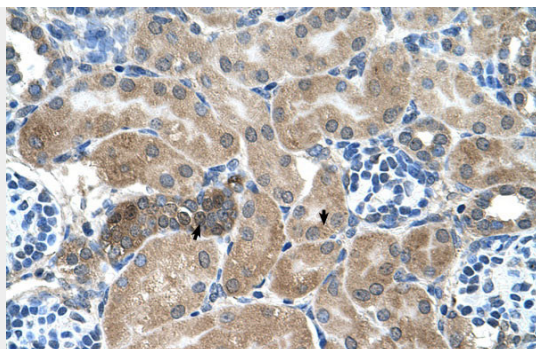
## SDCBP antibody - middle region - Protocols

Provided below are standard protocols that you may find useful for product applications.

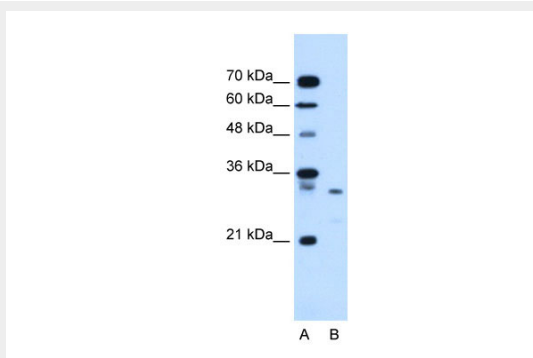
- [Western Blot](#)
- [Blocking Peptides](#)
- [Dot Blot](#)
- [Immunohistochemistry](#)
- [Immunofluorescence](#)
- [Immunoprecipitation](#)
- [Flow Cytometry](#)
- [Cell Culture](#)

## SDCBP antibody - middle region - Images





Human kidney



WB Suggested Anti-SDCBP Antibody Titration: 1.25µg/ml  
Positive Control: HepG2 cell lysate

#### SDCBP antibody - middle region - References

Boukerche, H., (2005) Cancer Res. 65(23), 10901-10911 Reconstitution and Storage: For short term use, store at 2-8°C up to 1 week. For long term storage, store at -20°C in small aliquots to prevent freeze-thaw cycles.