

LST-3TM12 antibody - middle region
Rabbit Polyclonal Antibody
Catalog # AI12451

Specification

LST-3TM12 antibody - middle region - Product Information

Application	WB
Primary Accession	Q71QF0
Other Accession	NM_001009562 , NP_001009562
Reactivity	Human, Rat
Predicted	Human
Host	Rabbit
Clonality	Polyclonal
Calculated MW	71kDa KDa

LST-3TM12 antibody - middle region - Additional Information

Alias Symbol **LST3, LST-3, LST-3TM12**

Format

Liquid. Purified antibody supplied in 1x PBS buffer with 0.09% (w/v) sodium azide and 2% sucrose.

Reconstitution & Storage

Add 50 ul of distilled water. Final anti-LST-3TM12 antibody concentration is 1 mg/ml in PBS buffer with 2% sucrose. For longer periods of storage, store at 20°C. Avoid repeat freeze-thaw cycles.

Precautions

LST-3TM12 antibody - middle region is for research use only and not for use in diagnostic or therapeutic procedures.

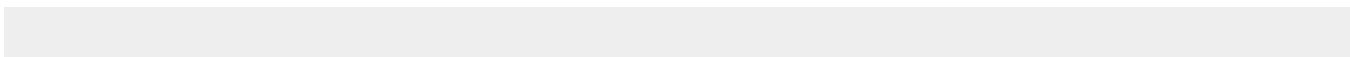
LST-3TM12 antibody - middle region - Protein Information

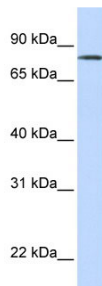
LST-3TM12 antibody - middle region - Protocols

Provided below are standard protocols that you may find useful for product applications.

- [Western Blot](#)
- [Blocking Peptides](#)
- [Dot Blot](#)
- [Immunohistochemistry](#)
- [Immunofluorescence](#)
- [Immunoprecipitation](#)
- [Flow Cytometry](#)
- [Cell Culture](#)

LST-3TM12 antibody - middle region - Images





WB Suggested Anti-LST-3TM12 Antibody Titration: 0.2-1 μ g/ml

ELISA Titer: 1:1562500

Positive Control: Human Lung