

Ano6 antibody - middle region
Rabbit Polyclonal Antibody
Catalog # AI12495**Specification**

Ano6 antibody - middle region - Product Information

Application	WB
Primary Accession	Q6P9J9
Other Accession	NM_175344 , NP_780553
Reactivity	Human, Mouse, Rat, Pig, Guinea Pig
Predicted	Human, Mouse, Rat, Pig, Guinea Pig
Host	Rabbit
Clonality	Polyclonal
Calculated MW	106kDa KDa

Ano6 antibody - middle region - Additional Information**Gene ID** 105722**Alias Symbol** 2900059G15Rik, AA407480, AW554778, F730003B03Rik, Tmem16f**Other Names**

Anoctamin-6, Small-conductance calcium-activated nonselective cation channel, SCAN channel, Transmembrane protein 16F, Ano6, Tmem16f

Format

Liquid. Purified antibody supplied in 1x PBS buffer with 0.09% (w/v) sodium azide and 2% sucrose.

Reconstitution & Storage

Add 50 ul of distilled water. Final anti-Ano6 antibody concentration is 1 mg/ml in PBS buffer with 2% sucrose. For longer periods of storage, store at 20°C. Avoid repeat freeze-thaw cycles.

Precautions

Ano6 antibody - middle region is for research use only and not for use in diagnostic or therapeutic procedures.

Ano6 antibody - middle region - Protein Information**Name** Ano6**Function**

Small-conductance calcium-activated nonselective cation (SCAN) channel which acts as a regulator of phospholipid scrambling in platelets, osteoblasts and fetal thymocytes. Phospholipid scrambling results in surface exposure of phosphatidylserine which in platelets is essential to trigger the clotting system whereas in osteoblasts is essential for the deposition of hydroxyapatite during bone mineralization. Has calcium-dependent phospholipid scramblase activity; scrambles phosphatidylserine, phosphatidylcholine and galactosylceramide. Can generate outwardly rectifying chloride channel currents in airway epithelial cells and Jurkat T lymphocytes.

Cellular Location

Cell membrane; Multi-pass membrane protein. Note=Shows an intracellular localization.
{ECO:0000250|UniProtKB:Q4KMQ2}

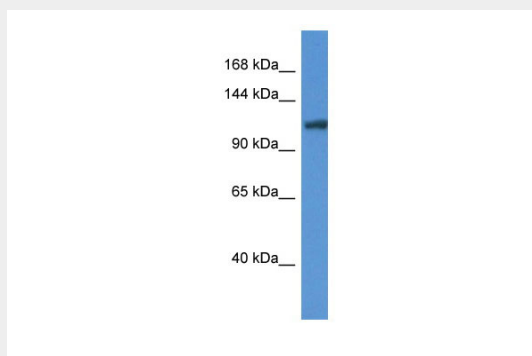
Tissue Location

Predominant expression seen in epithelial tissues. Also found in skeletal system where it is primarily expressed in osteoblasts.

Ano6 antibody - middle region - Protocols

Provided below are standard protocols that you may find useful for product applications.

- [Western Blot](#)
- [Blocking Peptides](#)
- [Dot Blot](#)
- [Immunohistochemistry](#)
- [Immunofluorescence](#)
- [Immunoprecipitation](#)
- [Flow Cytometry](#)
- [Cell Culture](#)

Ano6 antibody - middle region - Images

WB Suggested Anti-Ano6 Antibody Titration: 1.0 µg/ml
Positive Control: Mouse Liver