

**FCER1A antibody - N-terminal region**  
**Rabbit Polyclonal Antibody**  
**Catalog # AI12553****Specification**

---

**FCER1A antibody - N-terminal region - Product Information**

Application	<b>WB</b>
Primary Accession	<a href="#">P12319</a>
Other Accession	<a href="#">NM_002001</a> , <a href="#">NP_001992</a>
Reactivity	<b>Human</b>
Predicted	<b>Human</b>
Host	<b>Rabbit</b>
Clonality	<b>Polyclonal</b>
Calculated MW	<b>27kDa KDa</b>

**FCER1A antibody - N-terminal region - Additional Information****Gene ID** 2205**Alias Symbol** **FCE1A, FcERI****Other Names**

High affinity immunoglobulin epsilon receptor subunit alpha, Fc-epsilon RI-alpha, FcERI, IgE Fc receptor subunit alpha, FCER1A, FCE1A

**Format**

Liquid. Purified antibody supplied in 1x PBS buffer with 0.09% (w/v) sodium azide and 2% sucrose.

**Reconstitution & Storage**

Add 50 ul of distilled water. Final anti-FCER1A antibody concentration is 1 mg/ml in PBS buffer with 2% sucrose. For longer periods of storage, store at 20°C. Avoid repeat freeze-thaw cycles.

**Precautions**

FCER1A antibody - N-terminal region is for research use only and not for use in diagnostic or therapeutic procedures.

**FCER1A antibody - N-terminal region - Protein Information****Name** FCER1A**Synonyms** FCE1A**Function**

High-affinity receptor for immunoglobulin epsilon/IgE. Mediates IgE effector functions in myeloid cells. Upon IgE binding and antigen/allergen cross-linking initiates signaling pathways that lead to myeloid cell activation and differentiation. On mast cells, basophils and eosinophils stimulates the secretion of vasoactive amines, lipid mediators and cytokines that contribute to inflammatory response, tissue remodeling and cytotoxicity against microbes. Triggers the immediate hypersensitivity response to allergens as a host defense mechanism against helminth parasites,

pathogenic bacteria and venom toxicity. When dysregulated, it can elicit harmful life-threatening allergic and anaphylactic reactions.

**Cellular Location**

Cell membrane; Single-pass type I membrane protein

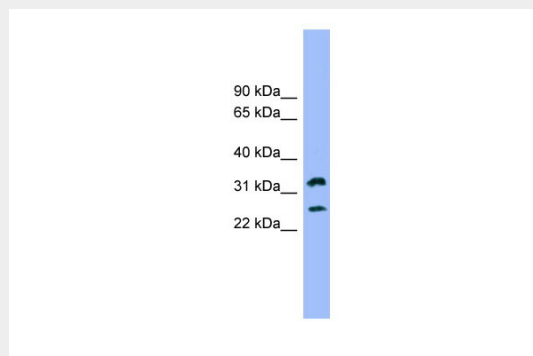
**Tissue Location**

Expressed in eosinophils.

**FCER1A antibody - N-terminal region - Protocols**

Provided below are standard protocols that you may find useful for product applications.

- [Western Blot](#)
- [Blocking Peptides](#)
- [Dot Blot](#)
- [Immunohistochemistry](#)
- [Immunofluorescence](#)
- [Immunoprecipitation](#)
- [Flow Cytometry](#)
- [Cell Culture](#)

**FCER1A antibody - N-terminal region - Images**

WB Suggested Anti-FCER1A Antibody Titration: 0.2-1  $\mu\text{g/ml}$

ELISA Titer: 1:62500

Positive Control: 721\_B cell lysate