

MUC12 antibody - middle region
Rabbit Polyclonal Antibody
Catalog # AI12590**Specification**

MUC12 antibody - middle region - Product Information

Application	WB
Primary Accession	O9UKN1
Other Accession	XM_499351 , XP_499351
Reactivity	Human
Predicted	Human
Host	Rabbit
Clonality	Polyclonal
Calculated MW	81kDa KDa

MUC12 antibody - middle region - Additional Information**Gene ID** 10071**Alias Symbol** MUC11, MUC-11, MUC-12**Other Names**

Mucin-12, MUC-12, Mucin-11, MUC-11, MUC12, MUC11

Format

Liquid. Purified antibody supplied in 1x PBS buffer with 0.09% (w/v) sodium azide and 2% sucrose.

Reconstitution & Storage

Add 50 ul of distilled water. Final anti-MUC12 antibody concentration is 1 mg/ml in PBS buffer with 2% sucrose. For longer periods of storage, store at 20°C. Avoid repeat freeze-thaw cycles.

Precautions

MUC12 antibody - middle region is for research use only and not for use in diagnostic or therapeutic procedures.

MUC12 antibody - middle region - Protein Information**Name** MUC12**Synonyms** MUC11**Function**

Involved in epithelial cell protection, adhesion modulation, and signaling. May be involved in epithelial cell growth regulation. Stimulated by both cytokine TNF-alpha and TGF-beta in intestinal epithelium.

Cellular Location

Membrane; Single-pass type I membrane protein

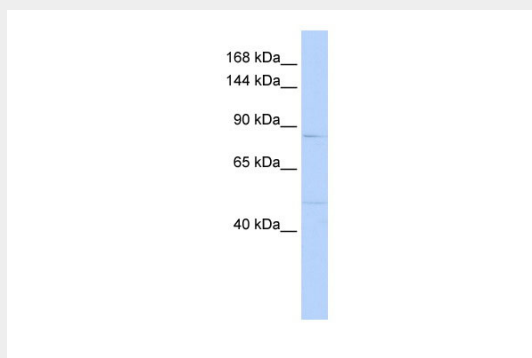
Tissue Location

Ubiquitous, with higher expression in colon. Down-regulated in colorectal cancer as well as in the colon of patients with ulcerative colitis (UC) and Crohn's disease (CD)

MUC12 antibody - middle region - Protocols

Provided below are standard protocols that you may find useful for product applications.

- [Western Blot](#)
- [Blocking Peptides](#)
- [Dot Blot](#)
- [Immunohistochemistry](#)
- [Immunofluorescence](#)
- [Immunoprecipitation](#)
- [Flow Cytometry](#)
- [Cell Culture](#)

MUC12 antibody - middle region - Images

WB Suggested Anti-MUC12 Antibody Titration: 0.2-1 μ g/ml

ELISA Titer: 1:62500

Positive Control: MCF7 cell lysate