

**NR2E1 antibody - middle region**  
**Rabbit Polyclonal Antibody**  
**Catalog # AI12592****Specification**

---

**NR2E1 antibody - middle region - Product Information**

Application	<b>WB</b>
Primary Accession	<a href="#">Q64104</a>
Other Accession	<a href="#">NM_003269</a> , <a href="#">NP_003260</a>
Reactivity	<b>Human, Mouse, Rat, Rabbit, Zebrafish, Pig, Horse, Bovine, Guinea Pig, Dog</b>
Predicted	<b>Human, Mouse, Rat, Rabbit, Zebrafish, Pig, Chicken, Horse, Dog</b>
Host	<b>Rabbit</b>
Clonality	<b>Polyclonal</b>
Calculated MW	<b>42kDa KDa</b>

**NR2E1 antibody - middle region - Additional Information****Gene ID** 21907**Alias Symbol** **TLL, TLX, XTLL****Other Names**

Nuclear receptor subfamily 2 group E member 1, Nuclear receptor TLX, Protein tailless homolog, Tll, mTll, Nr2e1, Tll, Tlx

**Format**

Liquid. Purified antibody supplied in 1x PBS buffer with 0.09% (w/v) sodium azide and 2% sucrose.

**Reconstitution & Storage**

Add 50 ul of distilled water. Final anti-NR2E1 antibody concentration is 1 mg/ml in PBS buffer with 2% sucrose. For longer periods of storage, store at 20°C. Avoid repeat freeze-thaw cycles.

**Precautions**

NR2E1 antibody - middle region is for research use only and not for use in diagnostic or therapeutic procedures.

**NR2E1 antibody - middle region - Protein Information****Name** Nr2e1**Synonyms** Tll, Tlx**Function**

Orphan receptor that binds DNA as a monomer to hormone response elements (HRE) containing an extended core motif half-site sequence 5'-AAGGTCA-3' in which the 5' flanking nucleotides participate in determining receptor specificity (By similarity). Regulates cell cycle progression in neural stem cells of the developing brain. Involved in the regulation of retinal development and

essential for vision. During retinogenesis, regulates PTEN-Cyclin D expression via binding to the promoter region of PTEN and suppressing its activity. May be involved in retinoic acid receptor (RAR) regulation in retinal cells.

**Cellular Location**

Nucleus {ECO:0000255|PROSITE-ProRule:PRU00407, ECO:0000269|PubMed:17901127}

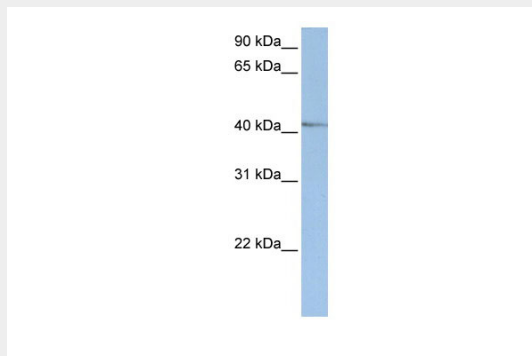
**Tissue Location**

Expressed in embryonic developing forebrain and in dorsal midbrain. Outside the neural epithelium only found in the surface ectoderm at the site of nasal placode formation, where subsequently the nasal and olfactory epithelium is formed. Also expressed in adult brain.

**NR2E1 antibody - middle region - Protocols**

Provided below are standard protocols that you may find useful for product applications.

- [Western Blot](#)
- [Blocking Peptides](#)
- [Dot Blot](#)
- [Immunohistochemistry](#)
- [Immunofluorescence](#)
- [Immunoprecipitation](#)
- [Flow Cytometry](#)
- [Cell Culture](#)

**NR2E1 antibody - middle region - Images**

WB Suggested Anti-NR2E1 Antibody Titration: 0.2-1 µg/ml

ELISA Titer: 1:312500

Positive Control: HepG2 cell lysate

**NR2E1 antibody - middle region - References**

Kumar, R.A., (er) Am. J. Med. Genet. B Neuropsychiatr. Genet. (2008) In press Reconstitution and Storage: For short term use, store at 2-8°C up to 1 week. For long term storage, store at -20°C in small aliquots to prevent freeze-thaw cycles.