

**MBL2 antibody - middle region**  
**Rabbit Polyclonal Antibody**  
**Catalog # AI12602****Specification**

---

**MBL2 antibody - middle region - Product Information**

Application	WB
Primary Accession	<a href="#">Q66S64</a>
Other Accession	<a href="#">NM_000242</a> , <a href="#">NP_000233</a>
Reactivity	Human, Rat, Pig, Goat, Sheep, Horse, Bovine
Predicted Host	Human, Pig, Horse
Clonality	Rabbit
Calculated MW	Polyclonal 24kDa KDa

**MBL2 antibody - middle region - Additional Information**

Alias Symbol	COLEC1, HSMBPC, MBL, MBP, MBP1, MGC116832, MGC116833, MBL2D, MBP-C
--------------	--

**Other Names**

Mannose-binding protein C, MBP-C, MBP1, Mannan-binding protein, Mannose-binding lectin, MBL2

**Format**

Liquid. Purified antibody supplied in 1x PBS buffer with 0.09% (w/v) sodium azide and 2% sucrose.

**Reconstitution & Storage**

Add 50 ul of distilled water. Final anti-MBL2 antibody concentration is 1 mg/ml in PBS buffer with 2% sucrose. For longer periods of storage, store at 20°C. Avoid repeat freeze-thaw cycles.

**Precautions**

MBL2 antibody - middle region is for research use only and not for use in diagnostic or therapeutic procedures.

**MBL2 antibody - middle region - Protein Information****Name** MBL2**Function**

Calcium-dependent lectin involved in innate immune defense. Binds mannose, fucose and N-acetylglucosamine on different microorganisms and activates the lectin complement pathway. Binds to late apoptotic cells, as well as to apoptotic blebs and to necrotic cells, but not to early apoptotic cells, facilitating their uptake by macrophages (By similarity).

**Cellular Location**

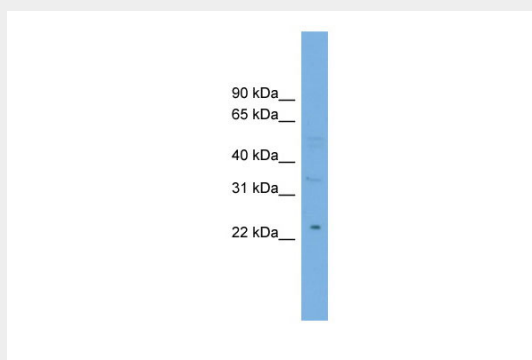
Secreted.

## MBL2 antibody - middle region - Protocols

Provided below are standard protocols that you may find useful for product applications.

- [Western Blot](#)
- [Blocking Peptides](#)
- [Dot Blot](#)
- [Immunohistochemistry](#)
- [Immunofluorescence](#)
- [Immunoprecipitation](#)
- [Flow Cytometry](#)
- [Cell Culture](#)

## MBL2 antibody - middle region - Images



WB Suggested Anti-MBL2 Antibody Titration: 0.2-1  $\mu$ g/ml  
Positive Control: Hela cell lysate