

SMC4 antibody - N-terminal region
Rabbit Polyclonal Antibody
Catalog # AI12657**Specification**

SMC4 antibody - N-terminal region - Product Information

Application	WB
Primary Accession	O9NTJ3
Other Accession	NM_001002800 , NP_001002800
Reactivity	Human, Mouse, Rat, Rabbit, Pig, Horse, Bovine, Guinea Pig, Dog
Predicted	Human, Mouse, Rat, Rabbit, Pig, Horse, Bovine, Guinea Pig, Dog
Host	Rabbit
Clonality	Polyclonal
Calculated MW	147kDa KDa

SMC4 antibody - N-terminal region - Additional Information**Gene ID** 10051**Alias Symbol** CAPC, SMC4L1, hCAP-C, CAP-C, SMC-4**Other Names**

Structural maintenance of chromosomes protein 4, SMC protein 4, SMC-4, Chromosome-associated polypeptide C, hCAP-C, XCAP-C homolog, SMC4, CAPC, SMC4L1

Format

Liquid. Purified antibody supplied in 1x PBS buffer with 0.09% (w/v) sodium azide and 2% sucrose.

Reconstitution & Storage

Add 50 ul of distilled water. Final anti-SMC4 antibody concentration is 1 mg/ml in PBS buffer with 2% sucrose. For longer periods of storage, store at 20°C. Avoid repeat freeze-thaw cycles.

Precautions

SMC4 antibody - N-terminal region is for research use only and not for use in diagnostic or therapeutic procedures.

SMC4 antibody - N-terminal region - Protein Information**Name** SMC4**Synonyms** CAPC, SMC4L1**Function**

Central component of the condensin complex, a complex required for conversion of interphase chromatin into mitotic-like condense chromosomes. The condensin complex probably introduces positive supercoils into relaxed DNA in the presence of type I topoisomerases and converts nicked DNA into positive knotted forms in the presence of type II topoisomerases.

Cellular Location

Nucleus. Cytoplasm. Chromosome. Note=In interphase cells, the majority of the condensin complex is found in the cytoplasm, while a minority of the complex is associated with chromatin. A subpopulation of the complex however remains associated with chromosome foci in interphase cells. During mitosis, most of the condensin complex is associated with the chromatin. At the onset of prophase, the regulatory subunits of the complex are phosphorylated by CDC2, leading to condensin's association with chromosome arms and to chromosome condensation. Dissociation from chromosomes is observed in late telophase

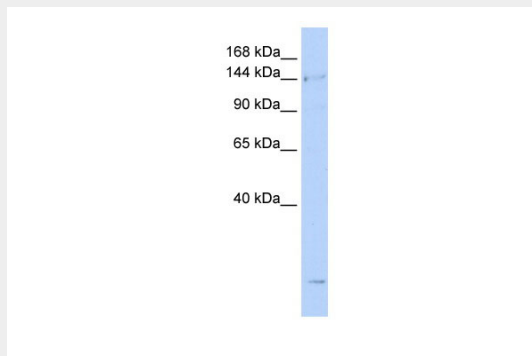
Tissue Location

Widely expressed. Higher expression in testis, colon, thymus.

SMC4 antibody - N-terminal region - Protocols

Provided below are standard protocols that you may find useful for product applications.

- [Western Blot](#)
- [Blocking Peptides](#)
- [Dot Blot](#)
- [Immunohistochemistry](#)
- [Immunofluorescence](#)
- [Immunoprecipitation](#)
- [Flow Cytometry](#)
- [Cell Culture](#)

SMC4 antibody - N-terminal region - Images

WB Suggested Anti-SMC4 Antibody Titration: 0.2-1 µg/ml

ELISA Titer: 1:62500

Positive Control: Jurkat cell lysate

SMC4 is strongly supported by BioGPS gene expression data to be expressed in Human Jurkat cells

SMC4 antibody - N-terminal region - References

Ham, M.F., (2007) Cancer Sci. 98(7), 1041-1047 Reconstitution and Storage: For short term use, store at 2-8°C up to 1 week. For long term storage, store at -20°C in small aliquots to prevent freeze-thaw cycles.