

**SMC4 antibody - middle region**  
**Rabbit Polyclonal Antibody**  
**Catalog # AI12658****Specification**

---

**SMC4 antibody - middle region - Product Information**

Application	WB
Primary Accession	<a href="#">O9NTJ3</a>
Other Accession	<a href="#">NM_001002800</a> , <a href="#">NP_001002800</a>
Reactivity	Human, Mouse, Rat, Zebrafish, Pig, Horse, Bovine, Guinea Pig, Dog
Predicted	Human, Mouse, Rat, Zebrafish, Pig, Chicken, Horse, Guinea Pig, Dog
Host	Rabbit
Clonality	Polyclonal
Calculated MW	147kDa KDa

**SMC4 antibody - middle region - Additional Information****Gene ID** 10051**Alias Symbol** CAPC, SMC4L1, hCAP-C, CAP-C, SMC-4**Other Names**

Structural maintenance of chromosomes protein 4, SMC protein 4, SMC-4, Chromosome-associated polypeptide C, hCAP-C, XCAP-C homolog, SMC4, CAPC, SMC4L1

**Format**

Liquid. Purified antibody supplied in 1x PBS buffer with 0.09% (w/v) sodium azide and 2% sucrose.

**Reconstitution & Storage**

Add 50 ul of distilled water. Final anti-SMC4 antibody concentration is 1 mg/ml in PBS buffer with 2% sucrose. For longer periods of storage, store at 20°C. Avoid repeat freeze-thaw cycles.

**Precautions**

SMC4 antibody - middle region is for research use only and not for use in diagnostic or therapeutic procedures.

**SMC4 antibody - middle region - Protein Information****Name** SMC4**Synonyms** CAPC, SMC4L1**Function**

Central component of the condensin complex, a complex required for conversion of interphase chromatin into mitotic-like condense chromosomes. The condensin complex probably introduces positive supercoils into relaxed DNA in the presence of type I topoisomerases and converts nicked DNA into positive knotted forms in the presence of type II topoisomerases.

**Cellular Location**

Nucleus. Cytoplasm. Chromosome. Note=In interphase cells, the majority of the condensin complex is found in the cytoplasm, while a minority of the complex is associated with chromatin. A subpopulation of the complex however remains associated with chromosome foci in interphase cells. During mitosis, most of the condensin complex is associated with the chromatin. At the onset of prophase, the regulatory subunits of the complex are phosphorylated by CDC2, leading to condensin's association with chromosome arms and to chromosome condensation. Dissociation from chromosomes is observed in late telophase

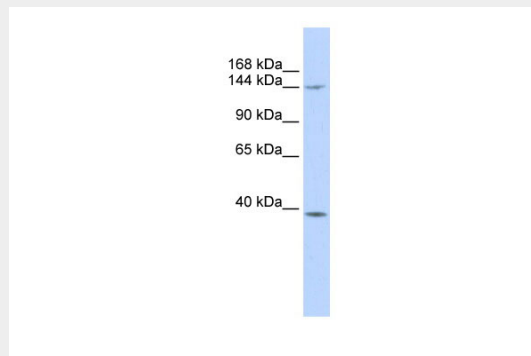
**Tissue Location**

Widely expressed. Higher expression in testis, colon, thymus.

**SMC4 antibody - middle region - Protocols**

Provided below are standard protocols that you may find useful for product applications.

- [Western Blot](#)
- [Blocking Peptides](#)
- [Dot Blot](#)
- [Immunohistochemistry](#)
- [Immunofluorescence](#)
- [Immunoprecipitation](#)
- [Flow Cytometry](#)
- [Cell Culture](#)

**SMC4 antibody - middle region - Images**

WB Suggested Anti-SMC4 Antibody Titration: 0.2-1 µg/ml

ELISA Titer: 1:312500

Positive Control: MCF7 cell lysate

There is BioGPS gene expression data showing that SMC4 is expressed in MCF7

**SMC4 antibody - middle region - References**

Ham, M.F., (2007) Cancer Sci. 98(7), 1041-1047 Reconstitution and Storage: For short term use, store at 2-8°C up to 1 week. For long term storage, store at -20°C in small aliquots to prevent freeze-thaw cycles.