

IL11RA antibody - N-terminal region
Rabbit Polyclonal Antibody
Catalog # AI12687**Specification**

IL11RA antibody - N-terminal region - Product Information

Application	WB
Primary Accession	Q14626
Other Accession	NM_004512 , NP_004503
Reactivity	Human, Mouse, Rat, Rabbit, Pig, Horse, Bovine, Guinea Pig, Dog
Predicted	Human, Mouse, Rabbit, Chicken, Horse, Bovine, Guinea Pig
Host	Rabbit
Clonality	Polyclonal
Calculated MW	43kDa kDa

IL11RA antibody - N-terminal region - Additional Information**Gene ID** 3590**Alias Symbol** MGC2146, CRSDA**Other Names**

Interleukin-11 receptor subunit alpha, IL-11 receptor subunit alpha, IL-11R subunit alpha, IL-11R-alpha, IL-11RA, IL11RA

Format

Liquid. Purified antibody supplied in 1x PBS buffer with 0.09% (w/v) sodium azide and 2% sucrose.

Reconstitution & Storage

Add 50 ul of distilled water. Final anti-IL11RA antibody concentration is 1 mg/ml in PBS buffer with 2% sucrose. For longer periods of storage, store at 20°C. Avoid repeat freeze-thaw cycles.

Precautions

IL11RA antibody - N-terminal region is for research use only and not for use in diagnostic or therapeutic procedures.

IL11RA antibody - N-terminal region - Protein Information**Name** IL11RA ([HGNC:5967](#))**Function**

Receptor for interleukin-11 (IL11). The receptor systems for IL6, LIF, OSM, CNTF, IL11 and CT1 can utilize IL6ST for initiating signal transmission. The IL11/IL11RA/IL6ST complex may be involved in the control of proliferation and/or differentiation of skeletogenic progenitor or other mesenchymal cells (Probable). Essential for the normal development of craniofacial bones and teeth. Restricts suture fusion and tooth number.

Cellular Location

[Interleukin-11 receptor subunit alpha]: Membrane; Single-pass type I membrane protein [Isoform HCR2]: Secreted

Tissue Location

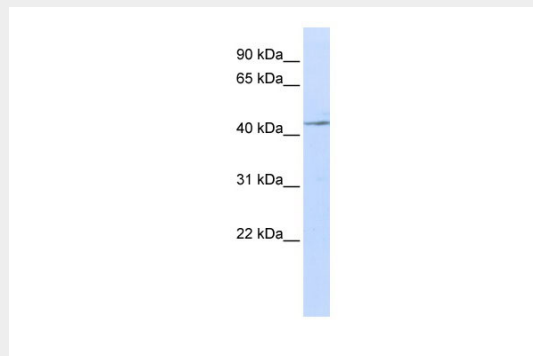
Expressed in a number of cell lines, including the myelogenous leukemia cell line K-562, the megakaryocytic leukemia cell line M-07e, the erythroleukemia cell line TF-1, and the osteosarcoma cell lines, MG-63 and SaOS-2 (PubMed:7670098). Also expressed in normal and malignant prostate epithelial cell lines. Expression levels are increased in prostate carcinoma.

IL11RA antibody - N-terminal region - Protocols

Provided below are standard protocols that you may find useful for product applications.

- [Western Blot](#)
- [Blocking Peptides](#)
- [Dot Blot](#)
- [Immunohistochemistry](#)
- [Immunofluorescence](#)
- [Immunoprecipitation](#)
- [Flow Cytometry](#)
- [Cell Culture](#)

IL11RA antibody - N-terminal region - Images



WB Suggested Anti-IL11RA Antibody Titration: 0.2-1 μ g/ml

ELISA Titer: 1:312500

Positive Control: Jurkat cell lysate

IL11RA antibody - N-terminal region - References

Nakayama, T., (2007) Int. J. Oncol. 30(4), 825-833 Reconstitution and Storage: For short term use, store at 2-8 C up to 1 week. For long term storage, store at -20 C in small aliquots to prevent freeze-thaw cycles.