

ATP1B4 antibody - middle region
Rabbit Polyclonal Antibody
Catalog # AI12722**Specification**

ATP1B4 antibody - middle region - Product Information

Application	WB
Primary Accession	O9UN42
Other Accession	NM_012069 , NP_036201
Reactivity	Human, Mouse, Rat, Rabbit, Horse, Bovine, Guinea Pig, Dog
Predicted	Human, Mouse, Rat, Rabbit, Chicken, Guinea Pig, Dog
Host	Rabbit
Clonality	Polyclonal
Calculated MW	41kDa KDa

ATP1B4 antibody - middle region - Additional Information**Gene ID** 23439**Other Names**

Protein ATP1B4, X, K-ATPase subunit beta-m, X/potassium-transporting ATPase subunit beta-m, ATP1B4

Format

Liquid. Purified antibody supplied in 1x PBS buffer with 0.09% (w/v) sodium azide and 2% sucrose.

Reconstitution & Storage

Add 50 ul of distilled water. Final anti-ATP1B4 antibody concentration is 1 mg/ml in PBS buffer with 2% sucrose. For longer periods of storage, store at 20°C. Avoid repeat freeze-thaw cycles.

Precautions

ATP1B4 antibody - middle region is for research use only and not for use in diagnostic or therapeutic procedures.

ATP1B4 antibody - middle region - Protein Information**Name** ATP1B4**Function**

May act as a transcriptional coregulator during muscle development through its interaction with SNW1. Has lost its ancestral function as a Na,K-ATPase beta-subunit.

Cellular Location

Nucleus inner membrane; Single-pass type II membrane protein. Note=Detected in nuclear envelops.

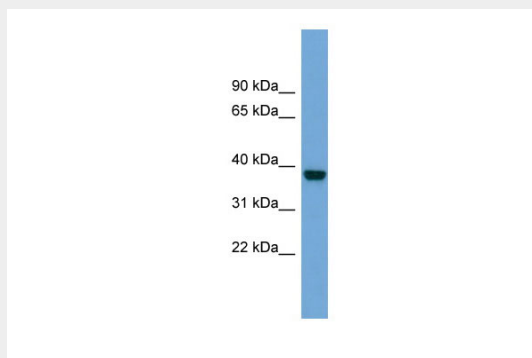
Tissue Location

Highly expressed in skeletal muscle and at a lower level in heart.

ATP1B4 antibody - middle region - Protocols

Provided below are standard protocols that you may find useful for product applications.

- [Western Blot](#)
- [Blocking Peptides](#)
- [Dot Blot](#)
- [Immunohistochemistry](#)
- [Immunofluorescence](#)
- [Immunoprecipitation](#)
- [Flow Cytometry](#)
- [Cell Culture](#)

ATP1B4 antibody - middle region - Images

WB Suggested Anti-ATP1B4 Antibody Titration: 0.2-1 µg/ml
Positive Control: COLO205 cell lysate