

TEX264 antibody - middle region
Rabbit Polyclonal Antibody
Catalog # AI12755**Specification**

TEX264 antibody - middle region - Product Information

Application	WB
Primary Accession	O9Y6I9
Other Accession	NM_015926 , NP_057010
Reactivity	Human, Mouse, Rat, Rabbit, Pig, Horse, Bovine, Guinea Pig, Dog
Predicted	Human, Mouse, Rat, Rabbit, Pig, Chicken, Bovine, Guinea Pig, Dog
Host	Rabbit
Clonality	Polyclonal
Calculated MW	34kDa KDa

TEX264 antibody - middle region - Additional Information**Gene ID** 51368**Alias Symbol** **DKFZp451H0417, FLJ13935, SIG11, ZSIG11****Other Names**

Testis-expressed sequence 264 protein, Putative secreted protein Zsig11, TEX264, ZSIG11

Format

Liquid. Purified antibody supplied in 1x PBS buffer with 0.09% (w/v) sodium azide and 2% sucrose.

Reconstitution & Storage

Add 50 ul of distilled water. Final anti-TEX264 antibody concentration is 1 mg/ml in PBS buffer with 2% sucrose. For longer periods of storage, store at 20°C. Avoid repeat freeze-thaw cycles.

Precautions

TEX264 antibody - middle region is for research use only and not for use in diagnostic or therapeutic procedures.

TEX264 antibody - middle region - Protein Information**Name** TX264**Function**

Major reticulophagy (also called ER-phagy) receptor that acts independently of other candidate reticulophagy receptors to remodel subdomains of the endoplasmic reticulum into autophagosomes upon nutrient stress, which then fuse with lysosomes for endoplasmic reticulum turnover (PubMed:<http://www.uniprot.org/citations/31006537> target="_blank">31006537, PubMed:<http://www.uniprot.org/citations/31006538> target="_blank">31006538). The ATG8- containing isolation membrane (IM) cradles a tubular segment of TEX264- positive ER near a three-way junction, allowing the formation of a synapse of

2 juxtaposed membranes with trans interaction between the TEX264 and ATG8 proteins (PubMed:31006537). Expansion of the IM would extend the capture of ER, possibly through a 'zipper-like' process involving continued trans TEX264-ATG8 interactions, until poorly understood mechanisms lead to the fission of relevant membranes and, ultimately, autophagosomal membrane closure (PubMed:31006537). Also involved in the repair of covalent DNA-protein cross-links (DPCs) during DNA synthesis: acts by bridging VCP/p97 to covalent DNA-protein cross-links (DPCs) and initiating resolution of DPCs by SPRTN (PubMed:32152270).

Cellular Location

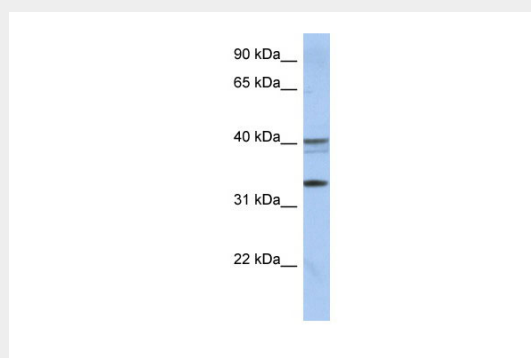
Endoplasmic reticulum membrane; Single-pass type III membrane protein. Cytoplasmic vesicle, autophagosome. Cytoplasm, cytosol. Nucleus. Chromosome. Note=Is trafficked from tubular ER to growing autophagosomes via its cytosolic LIR motif (PubMed:31006537) Also found in the cytosol, nucleus and chromatin (PubMed:32152270). In response to formation of covalent DNA-protein cross-links (DPCs), localizes to the nuclear periphery, and associates with DNA replication forks (PubMed:32152270).

TEX264 antibody - middle region - Protocols

Provided below are standard protocols that you may find useful for product applications.

- [Western Blot](#)
- [Blocking Peptides](#)
- [Dot Blot](#)
- [Immunohistochemistry](#)
- [Immunofluorescence](#)
- [Immunoprecipitation](#)
- [Flow Cytometry](#)
- [Cell Culture](#)

TEX264 antibody - middle region - Images



WB Suggested Anti-TEX264 Antibody Titration: 0.2-1 µg/ml
ELISA Titer: 1:12500
Positive Control: Human Placenta