

GOLM1 antibody - N-terminal region
Rabbit Polyclonal Antibody
Catalog # AI12771**Specification**

GOLM1 antibody - N-terminal region - Product Information

Application	WB
Primary Accession	Q8NBJ4
Other Accession	NM_016548 , NP_057632
Reactivity	Human, Mouse, Rat, Rabbit, Pig, Horse, Bovine, Guinea Pig, Dog
Predicted	Human, Mouse, Rabbit, Pig, Horse, Bovine, Guinea Pig, Dog
Host	Rabbit
Clonality	Polyclonal
Calculated MW	45kDa KDa

GOLM1 antibody - N-terminal region - Additional Information**Gene ID** 51280**Alias Symbol** C9orf155, FLJ22634, FLJ23608, GOLPH2, GP73, PSEC0257, bA379P1.3**Other Names**

Golgi membrane protein 1, Golgi membrane protein GP73, Golgi phosphoprotein 2, GOLM1, C9orf155, GOLPH2

Format

Liquid. Purified antibody supplied in 1x PBS buffer with 0.09% (w/v) sodium azide and 2% sucrose.

Reconstitution & Storage

Add 50 ul of distilled water. Final anti-GOLM1 antibody concentration is 1 mg/ml in PBS buffer with 2% sucrose. For longer periods of storage, store at 20°C. Avoid repeat freeze-thaw cycles.

Precautions

GOLM1 antibody - N-terminal region is for research use only and not for use in diagnostic or therapeutic procedures.

GOLM1 antibody - N-terminal region - Protein Information**Name** GOLM1**Synonyms** C9orf155, GOLPH2**Function**

Unknown. Cellular response protein to viral infection.

Cellular Location

Golgi apparatus, cis-Golgi network membrane; Single-pass type II membrane protein. Note=Early Golgi. Cycles via the cell surface and endosomes upon luminal pH disruption

Tissue Location

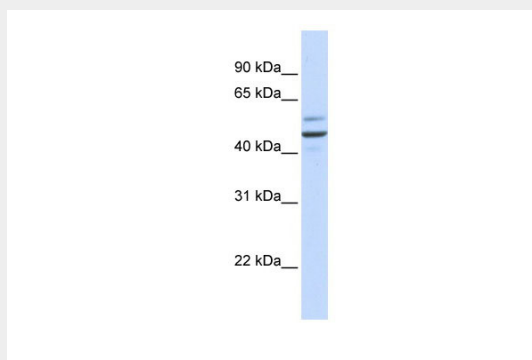
Widely expressed. Highly expressed in colon, prostate, trachea and stomach. Expressed at lower level in testis, muscle, lymphoid tissues, white blood cells and spleen. Predominantly expressed by cells of the epithelial lineage. Expressed at low level in normal liver. Expression significantly increases in virus (HBV, HCV) infected liver. Expression does not increase in liver disease due to non-viral causes (alcohol-induced liver disease, autoimmune hepatitis) Increased expression in hepatocytes appears to be a general feature of advanced liver disease. In liver tissue from patients with adult giant- cell hepatitis (GCH), it is strongly expressed in hepatocytes-derived syncytial giant cells. Constitutively expressed by biliary epithelial cells but not by hepatocytes.

GOLM1 antibody - N-terminal region - Protocols

Provided below are standard protocols that you may find useful for product applications.

- [Western Blot](#)
- [Blocking Peptides](#)
- [Dot Blot](#)
- [Immunohistochemistry](#)
- [Immunofluorescence](#)
- [Immunoprecipitation](#)
- [Flow Cytometry](#)
- [Cell Culture](#)

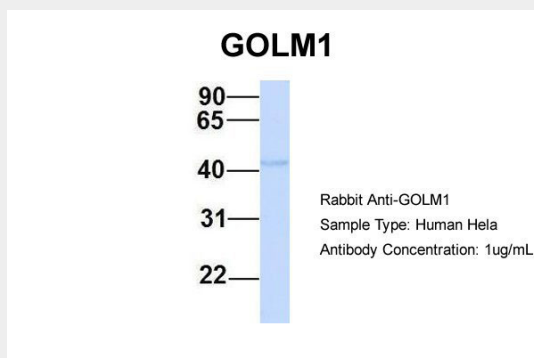
GOLM1 antibody - N-terminal region - Images



WB Suggested Anti-GOLM1 Antibody Titration: 0.2-1 µg/ml

ELISA Titer: 1:312500

Positive Control: Human brain



Host:Rabbit

Target Name:GOLM1

Sample Tissue:Human Hela

Antibody Dilution: 1.0µg/ml GOLM1 is supported by BioGPS gene expression data to be expressed in HeLa

GOLM1 antibody - N-terminal region - References

Bachert,C.,(2007)Traffic8(10),1415-1423ReconstitutionandStorage:Forshorttermuse,storeat2-8Cupto1week.Forlongtermstorage,storeat-20Cinsmallaliquotstopreventfreeze-thawcycles.