

TM7S3 Antibody - middle region
Rabbit Polyclonal Antibody
Catalog # AI12772**Specification**

TM7S3 Antibody - middle region - Product Information

Application	WB
Primary Accession	O9NS93
Other Accession	NP_057635
Reactivity	Human
Predicted	Human, Mouse, Rat, Rabbit, Zebrafish, Pig, Horse, Bovine, Guinea Pig, Dog
Host	Rabbit
Clonality	Polyclonal
Calculated MW	62kDa KDa

TM7S3 Antibody - middle region - Additional Information**Gene ID** 51768**Alias Symbol** **TM7SF3,**
Other Names
Transmembrane 7 superfamily member 3, Seven span transmembrane protein, TM7SF3**Format**

Liquid. Purified antibody supplied in 1x PBS buffer with 0.09% (w/v) sodium azide and 2% sucrose.

Reconstitution & Storage

Add 50 µl of distilled water. Final Anti-TM7S3 antibody concentration is 1 mg/ml in PBS buffer with 2% sucrose. For longer periods of storage, store at -20°C. Avoid repeat freeze-thaw cycles.

Precautions

TM7S3 Antibody - middle region is for research use only and not for use in diagnostic or therapeutic procedures.

TM7S3 Antibody - middle region - Protein Information**Name** TM7SF3**Function**

Involved in the inhibition of cytokine-induced death of pancreatic beta cells. Involved in the promotion of insulin secretion from pancreatic beta cells (PubMed: [21853325](http://www.uniprot.org/citations/21853325)). Is a downstream transcriptional target of p53/TP53, and acts as a pro-survival homeostatic factor that attenuates the development of cellular stress. Maintains protein homeostasis and promotes cell survival through attenuation of endoplasmic reticulum (ER) stress and the subsequent induction of unfolded protein response (UPR) (PubMed: [27740623](http://www.uniprot.org/citations/27740623)).

Cellular Location

Cell membrane; Multi-pass membrane protein

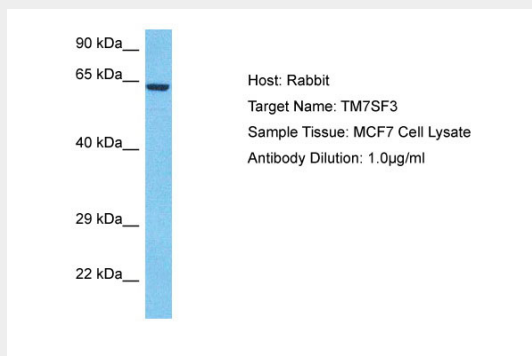
Tissue Location

Widely expressed. Highly expressed in kidney and pancreas.

TM7S3 Antibody - middle region - Protocols

Provided below are standard protocols that you may find useful for product applications.

- [Western Blot](#)
- [Blocking Peptides](#)
- [Dot Blot](#)
- [Immunohistochemistry](#)
- [Immunofluorescence](#)
- [Immunoprecipitation](#)
- [Flow Cytometry](#)
- [Cell Culture](#)

TM7S3 Antibody - middle region - Images

Host: Rabbit
Target Name: TM7S3
Sample Tissue: MCF7 Whole Cell lysates
Antibody Dilution: 1.0µg/ml