

Armxc1 antibody - C-terminal region
Rabbit Polyclonal Antibody
Catalog # AI12775**Specification**

Armxc1 antibody - C-terminal region - Product Information

Application	WB
Primary Accession	O9CX83
Other Accession	NM_030066 , NP_084342
Reactivity	Human, Mouse, Rat, Rabbit, Bovine, Dog
Predicted	Human, Mouse, Rat, Rabbit, Bovine
Host	Rabbit
Clonality	Polyclonal
Calculated MW	51kDa KDa

Armxc1 antibody - C-terminal region - Additional Information**Gene ID** 78248**Alias Symbol** 3010033I09Rik, ALEX1**Other Names**

Armadillo repeat-containing X-linked protein 1, Armcx1

Format

Liquid. Purified antibody supplied in 1x PBS buffer with 0.09% (w/v) sodium azide and 2% sucrose.

Reconstitution & Storage

Add 50 ul of distilled water. Final anti-Armcx1 antibody concentration is 1 mg/ml in PBS buffer with 2% sucrose. For longer periods of storage, store at 20°C. Avoid repeat freeze-thaw cycles.

Precautions

Armxc1 antibody - C-terminal region is for research use only and not for use in diagnostic or therapeutic procedures.

Armxc1 antibody - C-terminal region - Protein Information**Name** Armcx1**Function**

Regulates mitochondrial transport during axon regeneration. Increases the proportion of motile mitochondria by recruiting stationary mitochondria into the motile pool. Enhances mitochondria movement and neurite growth in both adult axons and embryonic neurons. Promotes neuronal survival and axon regeneration after nerve injury. May link mitochondria to the Trak1-kinesin motor complex via its interaction with Miro1.

Cellular Location

Mitochondrion. Mitochondrion outer membrane; Single-pass membrane protein

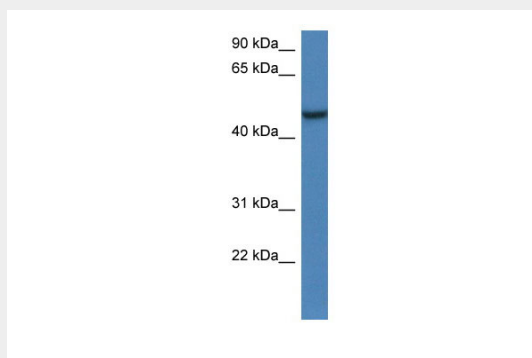
Tissue Location

Widely expressed in the adult nervous tissue, especially in the forebrain, including the cerebral cortex, hippocampus and thalamus.

Armxc1 antibody - C-terminal region - Protocols

Provided below are standard protocols that you may find useful for product applications.

- [Western Blot](#)
- [Blocking Peptides](#)
- [Dot Blot](#)
- [Immunohistochemistry](#)
- [Immunofluorescence](#)
- [Immunoprecipitation](#)
- [Flow Cytometry](#)
- [Cell Culture](#)

Armxc1 antibody - C-terminal region - Images

WB Suggested Anti-Armxc1 Antibody Titration: 1.0 μ g/ml
Positive Control: Mouse Kidney