

Tmem33 antibody - middle region
Rabbit Polyclonal Antibody
Catalog # AI12791**Specification**

Tmem33 antibody - middle region - Product Information

Application	WB
Primary Accession	O9Z142
Other Accession	NM_001034198 , NP_001029370
Reactivity	Human, Mouse, Rat, Rabbit, Zebrafish, Pig, Horse, Bovine, Guinea Pig, Dog
Predicted	Human, Mouse, Rat, Zebrafish, Pig, Chicken, Bovine, Guinea Pig, Dog
Host	Rabbit
Clonality	Polyclonal
Calculated MW	28kDa kDa

Tmem33 antibody - middle region - Additional Information**Gene ID** 59303

Alias Symbol	Tmem33
Other Names	
Transmembrane protein 33, Protein DB83, Tmem33, Db83	

Format

Liquid. Purified antibody supplied in 1x PBS buffer with 0.09% (w/v) sodium azide and 2% sucrose.

Reconstitution & Storage

Add 50 ul of distilled water. Final anti-Tmem33 antibody concentration is 1 mg/ml in PBS buffer with 2% sucrose. For longer periods of storage, store at 20°C. Avoid repeat freeze-thaw cycles.

Precautions

Tmem33 antibody - middle region is for research use only and not for use in diagnostic or therapeutic procedures.

Tmem33 antibody - middle region - Protein Information**Name** Tmem33**Synonyms** Db83**Function**

Acts as a regulator of the tubular endoplasmic reticulum (ER) network by modulating intracellular calcium homeostasis. Mechanistically, stimulates PKD2 calcium-dependent activity (By similarity). Suppresses the RTN3/4-induced formation of the ER tubules. Positively regulates PERK-mediated and IRE1-mediated unfolded protein response signaling. Plays an essential role in VEGF-mediated release of Ca(2+) from ER stores during angiogenesis. Also plays a role in the modulation of innate

immune signaling through the cGAS-STING pathway by interacting with RNF26. Participates in lipid metabolism by acting as a downstream effector of the pyruvate kinase/PKM. Forms a complex with RNF5 to facilitate polyubiquitination and subsequent degradation of SCAP on the ER membrane (By similarity).

Cellular Location

Endoplasmic reticulum membrane {ECO:0000250|UniProtKB:P57088}; Multi-pass membrane protein. Melanosome {ECO:0000250|UniProtKB:P57088}. Nucleus envelope {ECO:0000250|UniProtKB:P57088}. Note=Co-localizes with RTN4 at the ER sheets. {ECO:0000250|UniProtKB:P57088}

Tissue Location

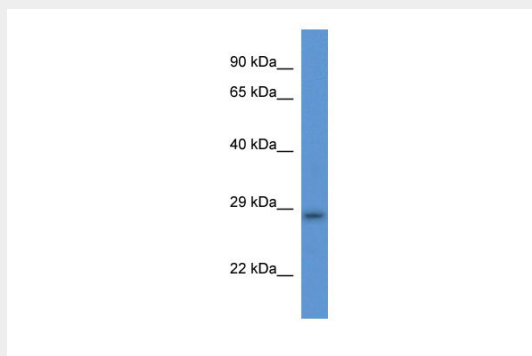
Highly expressed in the liver and significantly in brain, lungs and kidneys

Tmem33 antibody - middle region - Protocols

Provided below are standard protocols that you may find useful for product applications.

- [Western Blot](#)
- [Blocking Peptides](#)
- [Dot Blot](#)
- [Immunohistochemistry](#)
- [Immunofluorescence](#)
- [Immunoprecipitation](#)
- [Flow Cytometry](#)
- [Cell Culture](#)

Tmem33 antibody - middle region - Images



WB Suggested Anti-Tmem33 Antibody Titration: 1.0 µg/ml
Positive Control: Rat Heart