

Mafk antibody - N-terminal region
Rabbit Polyclonal Antibody
Catalog # AI12810**Specification**

Mafk antibody - N-terminal region - Product Information

Application	WB
Primary Accession	Q61827
Other Accession	NM_010757 , NP_034887
Reactivity	Human, Mouse, Rat, Zebrafish, Pig, Bovine, Guinea Pig, Dog
Predicted Host	Human, Mouse, Rat, Chicken, Bovine
Clonality	Rabbit
Calculated MW	Polyclonal 17kDa KDa

Mafk antibody - N-terminal region - Additional Information**Gene ID** 17135**Alias Symbol** AW061068, NF-E2, Nfe2u**Other Names**

Transcription factor MafK, Erythroid transcription factor NF-E2 p18 subunit, Mafk, Nfe2u

Format

Liquid. Purified antibody supplied in 1x PBS buffer with 0.09% (w/v) sodium azide and 2% sucrose.

Reconstitution & Storage

Add 50 ul of distilled water. Final anti-Mafk antibody concentration is 1 mg/ml in PBS buffer with 2% sucrose. For longer periods of storage, store at 20°C. Avoid repeat freeze-thaw cycles.

Precautions

Mafk antibody - N-terminal region is for research use only and not for use in diagnostic or therapeutic procedures.

Mafk antibody - N-terminal region - Protein Information**Name** Mafk**Synonyms** Nfe2u**Function**

Since they lack a putative transactivation domain, the small Mafs behave as transcriptional repressors when they dimerize among themselves (By similarity). However, they act as transcriptional activators by dimerizing with other (usually larger) basic-zipper proteins, such as NFE2, NFE2L1/NRF1, NFE2L2/NRF2 and NFE2L3/NRF3, and recruiting them to specific DNA-binding sites (PubMed:9240432). Small Maf proteins heterodimerize with Fos and may act as

competitive repressors of the NF-E2 transcription factor (By similarity).

Cellular Location

Nucleus.

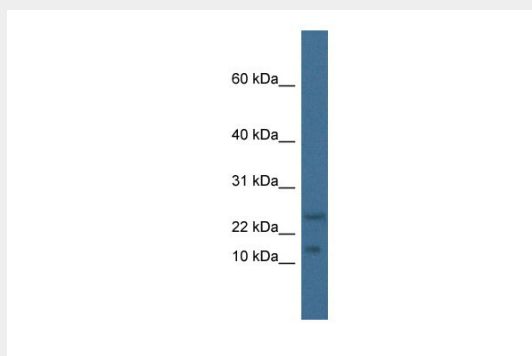
Tissue Location

Highly expressed in heart, skeletal muscle and placenta. Also expressed in erythroid cells

Mafk antibody - N-terminal region - Protocols

Provided below are standard protocols that you may find useful for product applications.

- [Western Blot](#)
- [Blocking Peptides](#)
- [Dot Blot](#)
- [Immunohistochemistry](#)
- [Immunofluorescence](#)
- [Immunoprecipitation](#)
- [Flow Cytometry](#)
- [Cell Culture](#)

Mafk antibody - N-terminal region - Images

WB Suggested Anti-Mafk Antibody Titration: 1.0 µg/ml
Positive Control: Mouse Liver